

LC 580

.A4

1913

Copy 1

PRESBYTERIAN COLLEGES



THE COLLEGES CO-OPERATING WITH
THE COLLEGE BOARD OF THE
PRESBYTERIAN CHURCH IN THE
UNITED STATES OF AMERICA

By transfer
The White House
1913

PRESBYTERIAN COLLEGES

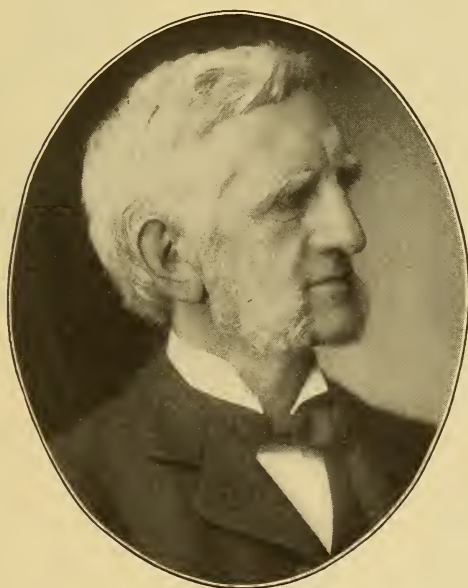
THE COLLEGES CO-OPERATING WITH
THE COLLEGE BOARD OF THE
PRESBYTERIAN CHURCH IN THE
UNITED STATES OF AMERICA

THE COLLEGE BOARD
OF THE PRESBYTERIAN CHURCH IN THE U. S. A.
156 FIFTH AVENUE, NEW YORK
1913

LC 580
A4
1913



THIRTIETH ANNIVERSARY
OF THE
COLLEGE BOARD



THE REV. HERRICK JOHNSON, D.D., L.L.D.
President Emeritus
Founder of the College Board, 1883

The Growth of Thirty Years

This issue of "Presbyterian Colleges" celebrates the end of the third decade of the life and work of the College Board. Organized in 1883 the Board hands to the General Assembly of 1913 its thirtieth annual report, and it may be well for the devoted servants of the church who are giving their lives to the cause of Christian education to take a brief survey of the past and note what progress has been made in thirty years.

**An
Anniversary**

By no means does the College Board claim for itself the credit for all that has been accomplished. The Board has been but the hand-maiden of the church and the fellow-laborer of the college presidents and instructors who, by their sacrificing and persevering labors, assisted by loyal and liberal Presbyterians in pulpit and pew, have wrought mightily for the upbuilding of our institutions of learning. It has been by the grace of God and by the grit of consecrated men and women that so much has been accomplished—much

**By Grace
and Grit**



J. H. MACCRACKEN, Ph.D.,
President



J. ROSS STEVENSON, D.D.
Vice-President

more than most of us realize while our eyes are fixed upon the great work which remains to be done.

It was about the year 1880 that there occurred within the Presbyterian Church a great revival of interest in the cause of Christian education. Speaking on the subject in 1882, Dr. D. S. Gregory, then President of Lake Forest University, affirmed that within the preceding five years—"perhaps I should say in the last year or two"—more had been said and done to further the cause of higher Christian education than during the previous quarter century. He and others, notable among them Dr. Herrick Johnson, the founder of the College Board and still its honored President-Emeritus, were prophets of a new era, and several successive Assemblies gave unusual attention to this subject. There was need of revival. It was pointed out that whereas the Presbyterian Church had long stood in the forefront as the exponent and promoter of Christian education, it had been seriously distanced as a builder of colleges by Methodists, Baptists, and Congregationalists. In his address, Dr. Gregory gave statistics to show that in 1879 the Presbyterian Church had but thirteen institutions of higher learning which it might call its own, and this number included Princeton, Hamilton, and Washington and Jefferson, which were not ecclesiastically under Presbyterian control. He reported the real estate and endowment of these thirteen institutions as aggregating only \$4,537,000, while each of the other denominations mentioned held college property of double this value.

**The Revival
of 1880**

As an outcome of this revival of interest came the organization of the College Board in 1883. At this time, according to the report of the Commissioner of Education, there

In 1883

was a total of twenty Presbyterian Colleges, including Princeton, Hamilton, and New York University (then reported as non-sectarian), and the total value of their real estate and endowment amounted to \$5,541,000. Several of these institutions were not really of college grade, but there was about an equal number reported as secondary schools in 1883 (for instance, Park and Coe) which soon reached college rank, so that twenty may fairly be considered the correct number of real colleges at that time. It would not be fair to conclude that these twenty colleges represented the total results of Presbyterian activity in education during the life of the church, for there were a number of institutions connected with the Southern Presbyterian church in 1883 which had been fostered by the church before its division, and Presbyterians had assisted greatly in the establishment and maintenance of colleges which were affiliated with other denominations, particularly Congregationalists. Yet these twenty colleges were all that the denomination had to show in 1883 as the result of its educational effort during a period of 137 years—since the founding of Princeton in 1746. The contrast between that period and the last thirty years may be thus stated:


During the 137 years from 1746 to 1883, the Presbyterian Church built up twenty institutions of higher learning and gathered for their use property and endowment to the value of \$5,541,000.

Threefold Growth


During the thirty years from 1883 to 1913, the Presbyterian Church has added forty institutions of higher learning and put \$24,000,000 into the property and endowment of its colleges.

In round numbers the Presbyterian Church has three times as many colleges and six times as much college property as it had thirty years ago. There is certainly reason for much encouragement and for profound gratitude to the great Head of the Church in this splendid

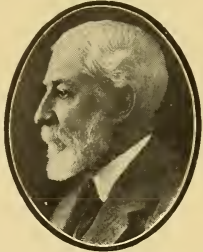
BOARD




LOUIS H. SEVERANCE




FREDERICK W. GARVIN



ELISHA H. PERKINS



JAMES H. POST



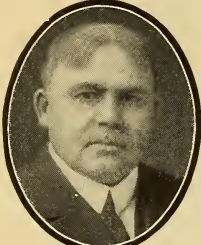
REV. MINOT C. MORGAN

MEMBERS

BOARD



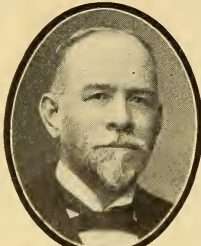
JAMES G. K. McCLURE, D.D., LL.D.



JOHN B. LAIRD, D.D.



T. A. WIGGINTON, D.D.



HON. JAMES A. BEAVER, LL.D.



HON. THOMAS E. HODGES
MEMBERS

development. The chart herewith appended puts this growth in graphic form:

Growth of Presbyterian Colleges

In 30 Years, Since the Organization of the College Board

INCREASE IN NUMBER OF COLLEGES

1883	██████████	20 Colleges
	Including Hamilton and Princeton Colleges	
1913	████████████████████	60 Colleges
	Not Including Hamilton and Princeton Colleges	

VALUE OF PROPERTY AND ENDOWMENT

1883	██████████	\$5,541,000
	Including Hamilton and Princeton Colleges	
1913	████████████████████	\$31,886,679
	Not Including Hamilton and Princeton Colleges	

STUDENTS IN COLLEGE DEPARTMENTS

1883	██████████	2,212
	Including Hamilton and Princeton Colleges	
1913	████████████████████	7,770
	Not Including Hamilton and Princeton Colleges	
Total number of students in all departments in 1913		21,731

Of course, comparatively little of all that has been accomplished is directly due to the activities of the College Board; but a study of the development goes to show that the organization of the Board gave a great impetus to the forward movement, and that the Assembly was eminently wise in appointing a denominational agency to further this cause. Its very existence stimulated local activity and induced the establishment of some of our best schools in places where institutions of learning were needed but where the local friends of the enterprises were loath to begin without some indication that assistance would come from the church at large. At the same time, the steady educational work of the Board has been the means of stimulating the churches to contribute for the support of the colleges which had been organized, and has brought the needs of these institutions to the attention of distant friends of the cause. Without the existence of the Board, the churches would not have been trained to make offerings for the maintenance

of colleges, and without the aid of these gifts some colleges could scarcely have survived.

The organization of the College Board was the signal for the beginning of new colleges and

Birth of New Colleges for preparatory schools to raise their standards. Of the colleges now on our list, seven

were organized in 1883 and 1884, and seven others which were previously little more than academies blossomed out into colleges at about the same time. At the end of its third year, the College Board reported to the Assembly that it was assisting ten institutions which had come into existence since it was organized, some of these being academies. It is interesting to observe that of the sixty colleges now affiliated with the College Board:

- 17 were in existence as colleges in 1883.
- 3 were counted as non-sectarian in 1883.
- 8 were received with the Cumberland Presbyterian Church.
- 32 were organized or grew from academies into colleges since the organization of the College Board.

A few of the Presbyterian colleges in existence when the College Board began its career

Changes are no longer numbered among the living; some of those which

sprang up in the early years were unwisely located or starved for lack of support; in some cases unions have been effected, and various other changes have occurred. Many academies once flourishing have closed because of the rapid development of public high schools; but on the whole the money contributed by the church has been wisely and effectively used, and numerous well-established institutions stand as monuments to the patriotism and generosity of Presbyterians and are steadily raising their standards and increasing their output of strong Christian citizenship, and the church has reason to rejoice in what it has been privileged to do.

Although such great progress has been made, there is need of a new awakening to the

New Revival Needed importance of Christian education. The rapid development

of secular institutions makes it imperative that the endowment of all our Presbyterian colleges should be largely and

BOARD



PROF. J.C. EGBERT



JAMES S. HUBBARD



HENRY B. MCCORMICK

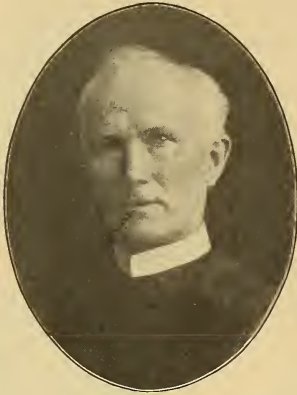


JOHN R. RUSH



REV. FREDERICK E. STOCKWELL
MEMBERS

quickly increased, that they may perfect their equipment and provide facilities which are in every respect equal to the best. This is particularly true of those institutions in the West and Southwest where the country was more recently settled, but where the population is rapidly increasing, and where the same kind of educational pioneering is needed that did so much for the East and Middle West a century or more ago. Through its colleges the Presbyterian Church has given to the older portion of the country a great host of skilled Christian leaders in all walks of life. Just such



REV. ROBERT MACKENZIE, D.D.
Secretary



REV. JAMES E. CLARKE, D.D.
Associate Secretary

leadership is needed even more in the newer West, which is still in the formative period, and to secure it our hope is in the Christian college.

The statement will scarcely be questioned that the present power, leadership, vision, and world-wide service of Presbyterianism is due to that Christian culture on which the church placed such emphasis in its early days. Christian education is the wide-spreading root from which grows the vigorous and fruitful tree of Christian civilization, and it is only as churches have been blessed with the leadership of educated men that they have caught the vision of their Master and given freely of their wealth and of their manhood to extend the kingdom unto the uttermost parts of the earth. Of such fundamental importance did the early Presbyterians of America consider this work of Christian education, that there was a time when it was ordered that all of the benevolent offerings of the denomination should go to the establishment of Princeton College. The condition which prevailed in the East at that time and which called for a concentration of effort upon this single benevolent cause is closely duplicated in parts of the newer West to-day. The people are struggling to establish the institutions of civilization, beginning with their own homes. The church does not counsel these pioneers to concentrate upon the establishment of Christian schools. On the contrary, they are urged to devote the greater portion of their benevolent gifts for other purposes. The church cannot well do otherwise. It cannot well

have two policies. Yet a policy which is appropriate to the church in the older settled portions of the land, where Christian schools are numerous and well endowed, would not have been a fitting policy in any part of the republic in its youth, and is not now adapted to the development of a strong Christian citizenship in the newer West. If that portion of our land is to give to the future that type of Christian citizenship which has been produced by the Christian schools of the East it must have similar schools suitably equipped. It *must* have them.



HENRY L. SMITH
Treasurer



GEORGE R. BRAUER
Office Secretary and Asst. Treas.

If this imperative need of the West *must* be met, and if the church cannot change its uniform policy without detriment, what is to be done? The problem constitutes an urgent appeal to men and women of wealth in the older parts of the church. Their rich heritage is in large part due to the broad vision and liberal spirit of their forefathers. Out of their abundance they can provide for the youth of the newer parts of the country what their own fathers provided for them in its more settled portions. We are told that the time is coming when the West shall dominate the East. What kind of a power will it be which rules the country then? The answer depends largely upon the kind of training which is given the youth of the present generation and the generations to follow, and training of the right kind—the kind which made the Presbyterian Church what it is—comes only from the strong Christian school. Every sentiment of true patriotism—which is true Presbyterianism—calls upon our men and women of large means to invest their possessions in the production of that type of Christian manhood and womanhood which is the output of the Christian college.

The Colleges

On the following pages will be found statements of the several Presbyterian colleges. These reports are for the college year which closed in June, 1912, and show the condition and operations of the colleges at that date. Many of these colleges are actively at work increasing their endowment. This is an added expense to the college for the time being, and sometimes interferes with the regular income for the annual maintenance.



STUDENTS FOR THE MINISTRY IN ONE OF OUR COLLEGES

Several colleges report indebtedness but explain that this indebtedness was incurred by the purchase of additional campus and equipment which were needed. These increasing expenses are unavoidable as a college grows and raises its standard of education.

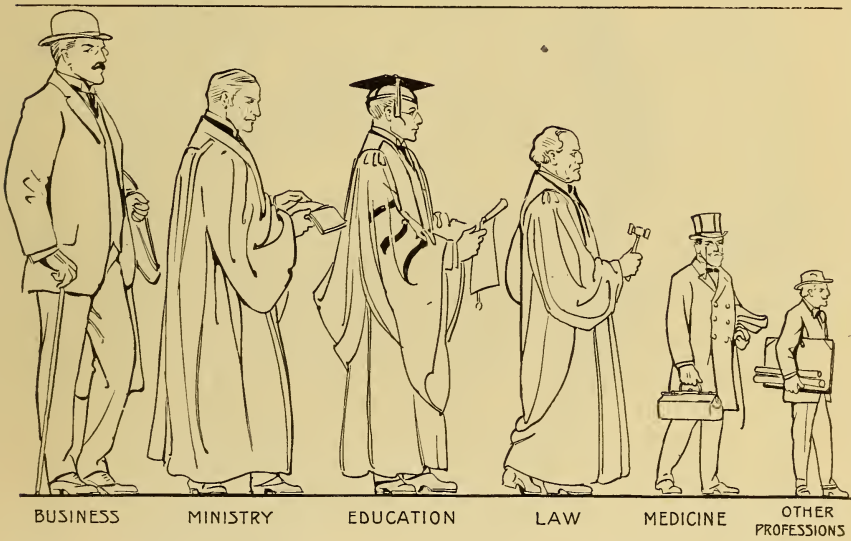
At the annual conference of the college presidents held at Louisville, Ky., May, 1912, the following plan of standardization of Presbyterian colleges was adopted:

A standard college must meet the following requirements:

1. It must have six professors, giving full time to college or university work, and offer a course of four full years in the liberal arts and sciences; and must require for admission not less than the usual four years of academic or high-school preparation or its equivalent, in addition to the pre-academic or grammar school studies.
2. Its heads of departments must have the Baccalaureate degree and M.A. degree, or, in lieu of the M.A. degree, conspicuous teaching ability.

3. It must have \$200,000 of productive funds, or an income for maintenance of not less than \$15,000 per annum.
4. It must have a library of not less than 5,000 volumes.
5. It must have a laboratory equipment sufficient for at least two years' work each in physics, chemistry, botany, and zoology, according to modern methods of instruction in these subjects.
6. It must have one hour a week at least of Biblical instruction in all the liberal arts classes.
7. It must have only such professors and teachers as are of positive Christian character and influence.

The Board and college presidents are now engaged in the task of classifying the colleges and of bringing all fully up to the standard.



DISTRIBUTION OF PRODUCT OF PRESBYTERIAN COLLEGES

BASED UPON THE STATISTICS OF ALUMNI AND ALUMNE GIVEN BY THE COLLEGES IN THE FOLLOWING PAGES

The total number of graduates by occupations is as follows: Business, 6,134; Ministry, 5,532; Education, 5,366; Law, 4,014; Medicine, 2,405; Other Professions, 1,785.

Several of the larger colleges have not given details as to graduates by occupations and are not considered in the above summary; and a few colleges noted above cover not the entire product but graduates of recent years. Graduates of Maryville College in the above summary are for the period 1866-1912.



ALBANY COLLEGE

ALBANY COLLEGE, Albany, Oregon

Co-educational. Organized 1866

Government.—By Twenty-four Trustees elected by the Synod of Oregon.

Period covered by this Report.—June 10, 1911—June 10, 1912.

Faculty.—Number of Members..... 14

Property. —Land (Acres, 58).....	\$66,800.00	
Buildings (No. of, 2).....	23,000.00	
Furniture and Equipment.....	5,000.00	
Library: No. of Books, 3,600; Value.....	1,500.00	
Total Property.....		\$96,300.00

Endowment. —		
Income Producing.....	\$21,369.00	
Non-income Producing.....	11,192.00	
(Pledges toward additional Endowment, \$124,100)		
Total Endowment.....		32,561.00
Campaign to increase Endowment to \$250,000 completed Jan. 1, 1913		

Other Funds.....

Total Assets		\$128,861.00
Less Net Indebtedness (\$34,200 for new campus).....		51,338.00

Net Assets..... \$77,523.00

Gifts Received During Year.—For Endowment..... \$1,420.00

Expenses of Maintenance. —		
Faculty Salaries, \$12,300; Other Salaries, \$850.....	\$13,150.00	
All other Expenses.....	5,255.62	
Total Expenses.....		\$18,405.62

Income for Maintenance. —		
From Endowment.....	\$1,151.77	
Student Fees.....	4,608.15	
Room Rent, ———; Boarding Department, ———		
Individuals, \$1,340; Other Sources, \$200.....	1,540.00	
Churches: Direct or through College Board.....	971.47	
College Board.....	3,000.00	
Total Income.....		11,271.39

Deficit..... \$7,134.23

Students. —College.....	16	
Preparatory.....	33	
Others (Special).....	127	
Total (Men, 24; Women, 25).....		176
Graduates 1911-12 (Men —; Women, 2).....		2

Bible Study.—Required of all regular students.

Alumni and Alumnae. —Since the year 1873:		
Ministers.....	12	
Students now in Theological Seminaries.....	2	
Foreign Missionaries.....	2	
Women in Mission Work.....	3	
Other Christian Workers.....	..	
Teaching.....	72	
Law.....	9	
Medicine.....	10	
Other Professions.....	12	
Business, 29; all Others, 44.....	73	
Total, Less 12, counted twice.....		183



ALBERT LEA COLLEGE

ALBERT LEA COLLEGE, Albert Lea, Minnesota

For Women. Organized 1884

Government.—By Twenty-one Trustees who elect their successors, but they must elect six trustees nominated by the synod of Minnesota.

Period covered by this Report.—September, 1911—September, 1912.

Faculty.—Number of Members 15

Property.—Land (Acres, 8, value included in Building total)

Buildings (No. of, 3)	\$142,842.83	
Furniture and Equipment	7,577.08	
Library: No. of Books, 3,000; Value	3,781.30	
Total Property		\$154,201.21

Endowment.—

Income Producing	\$59,360.00	
Non-income Producing	10,017.55	
(Pledges toward additional Endowment, \$231)		
Total Endowment		69,377.55

Other Funds.

Total Assets.		\$223,578.76
Less Net Indebtedness.		50,997.40

Net Assets. \$172,581.36

Gifts Received During Year.

Expenses of Maintenance.—

Faculty Salaries, \$9,924.85; Other Salaries, \$1,000	\$10,924.85	
All other Expenses	11,438.36	
Total Expenses		\$22,363.21

Income for Maintenance.—

From Endowment	\$2,986.77	
Student Fees	5,134.26	
Room Rent, —; Boarding Department, —		
Individuals, \$1,950.15; Other Sources, \$543	2,493.15	
Churches: Direct or through College Board	92.62	
College Board		
Total Income		10,706.80

Deficit. \$11,656.41

Students.—College 19

Preparatory	21	
Others (Special)	120	
Total		160
Graduates 1911-12		8

Bible Study.—Required of all students.

Alumnæ.—Since 1884-1912:

Ministers	
Students now in Theological Seminaries	
Foreign Missionaries	2	
Women in Mission Work	4	
Other Christian Workers		
Teaching	100	
Law		
Medicine		
Other Professions		
Business, —; all Others, —		
Records Incomplete		



Administration Building

ALMA COLLEGE



Main Building

ARKANSAS CUMBERLAND COLLEGE

ARKANSAS CUMBERLAND COLLEGE

Clarksville, Arkansas

Co-educational. Organized 1891

Government.—By Nine Trustees, elected by the Synod of Arkansas.

Period covered by this Report.—September 1, 1911—August 30, 1912.

Faculty.—Number of Members. 11

Property. —Land (Acres, 51)	\$ 5,300.00	
Buildings (No. of, 5; 2 are valued in Endowment) . .	25,000.00	
Furniture and Equipment	2,250.00	
Library: No. of Books, 4,000; Value	1,500.00	
Total Property		\$34,050.00

Endowment. —		
Income Producing	\$29,019.00	
Non-income Producing	8,874.16	
Total Endowment		37,893.16

Other Funds.

Total Assets.		\$71,943.16
Less Net Indebtedness.		4,500.00

Net Assets. \$67,443.16

Gifts Received During Year.—

For Equipment, \$605.50; Endowment, \$2,477.84. \$3,083.34

Expenses of Maintenance.—

Faculty Salaries, \$4,807.76; Other Salaries, \$300. . .	\$5,107.76	
All other Expenses	1,830.96	
Total Expenses		\$6,938.72

Income for Maintenance.—

From Endowment	\$753.26	
Student Fees	3,043.30	
Room Rent, \$164; Boarding Department,	164.00	
Individuals, \$246.67; Other Sources, \$162.94	409.61	
Churches: Direct or through College Board	197.60	
College Board (Total Grant, \$750)	375.00	
Total Income		5,542.77

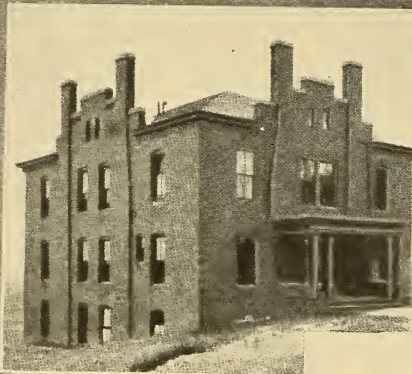
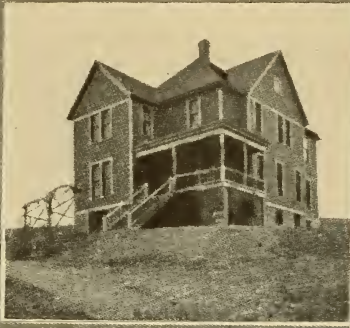
Deficit. \$1,395.95

Students. —College	28	
Preparatory	82	
Others (Special)	40	
Total (Men, 72; Women, 78)		150
Graduates 1911-12 (Men, 4; Women, 1)		5

Bible Study.—Required of all students.

Alumni and Alumnae.—Since the year 1891:

Ministers	8	
Students now in Theological Seminaries	4	
Foreign Missionaries	
Women in Mission Work	
Other Christian Workers	
Teaching	23	
Law	
Medicine	2	
Other Professions	7	
Business, —; all Others, 12	12	
Total		86



Rankin Hall
Hamilton Hall
Philadelphia Hall

BELLEVUE COLLEGE

Clarke Hall
Lowrie Hall
Fontenelle Hall

BELLEVUE COLLEGE, Bellevue, Nebraska

Co-educational. Organized 1880

Government.—By Thirty-nine Trustees, who elect their successors; two-thirds must be members of the Presbyterian Church.

Period covered by this Report.—June 1, 1911—June 1, 1912.

Faculty.—Number of Members..... 22

Property. —Land (Acres, —).....	\$73,700.00	
Buildings (No. of, 11).....	72,157.99	
Furniture and Equipment.....	10,579.91	
Library: No. of Books, 5,800; Value.....	6,430.00	
Total Property.....		\$162,867.90

Endowment. —		
Income Producing.....	42,080.00	
Other Funds		

Total Assets		\$204,947.90
Less Net Indebtedness		22,912.36

Net Assets		\$182,035.54
-------------------------	--	--------------

Gifts Received During Year. —		
For Land, ———; Building, \$40,005.....	\$40,005.00	
Equipment, \$16,000; Endowment, \$230.....	16,230.00	
Total (Received in Cash, \$235).....		\$56,235.00

Expenses of Maintenance. —		
Faculty Salaries, \$15,731.90; Other Salaries, \$5,329.92.....	\$21,061.82	
All other Expenses.....	14,813.84	
Total Expenses.....		\$35,875.66

Income for Maintenance. —		
From Endowment.....	\$1,849.19	
Student Fees.....	8,492.55	
Room Rent, \$4,286.79; Boarding Department, \$231.96.....	4,518.75	
Individuals, \$3,522.95; Other Sources, \$1,053.31.....	4,576.26	
Churches: Direct or through College Board.....	353.84	
College Board.....	3,040.00	
Total Income.....		22,830.59

Deficit		\$13,045.07
----------------------	--	-------------

Students. —College.....	99	
Preparatory.....	43	
Others (Special).....	6	
Total (Men, 68; Women, 80).....		148
Graduates 1911-12 (Men, 8; Women, 8).....		16

Bible Study.—Required of all students.

Alumni and Alumnæ. —Since the year 1880:		
Ministers.....	38	
Students now in Theological Seminaries.....	4	
Foreign Missionaries.....	8	
Women in Mission Work.....	..	
Other Christian Workers.....	2	
Teaching.....	45	
Law.....	8	
Medicine.....	8	
Other Professions.....	15	
Business, 7; all Others, 53.....	60	
Total, Less 3, counted twice.....		185



Main Building and Science Hall



The Campus

BLACKBURN COLLEGE

BLACKBURN COLLEGE, Carlinville, Illinois

(Legal Name, Blackburn University)

Co-educational. Organized 1857

Government.—By Sixteen Trustees, who elect their successors; but nominations for election must be approved by the Synod of Illinois.

Period covered by this Report.—July 1, 1911—June 30, 1912.

Faculty.—Number of Members. 11

Property. —Land (Acres, 33).....	\$ 5,000.00	
Buildings (No. of, 3).....	37,500.00	
Furniture and Equipment.....	11,750.00	
Library: No. of Books, 4,000; Value.....	1,500.00	
Total Property.....		\$ 55,750.00

Endowment. —		
Income Producing.....		107,500.00
(Pledges toward additional endowment, \$8,000)		

Other Funds. —Ann Brebner Fund for Candidates for Ministry....		23,000.00
---	--	-----------

Total Assets.		\$186,250.00
Less Net Indebtedness.		1,000.00

Net Assets.		\$185,250.00
--------------------------	--	--------------

Gifts Received During Year.....

Expenses of Maintenance. —		
Faculty Salaries, \$5,355; Other Salaries, ———... ..	\$5,355.00	
All other Expenses.....	3,746.09	
Total Expenses.....		\$9,101.09

Income for Maintenance. —		
From Endowment.....	\$4,868.69	
Student Fees.....	2,004.00	
Room Rent, ———; Boarding Department, ———.....		
Individuals, ———; Other Sources, \$1,100.....	1,100.00	
Churches: Direct or through College Board.....	414.00	
College Board (Total Grant, \$1,000).....	500.00	
Total Income.....		8,886.69

Deficit.		\$214.40
-----------------------	--	----------

Students. —College.....	30	
Preparatory.....	22	
Others (Special).....	94	
Total (Men, 48; Women, 98).....		146
Graduates 1911-12 (Men, 1; Women, 3).....		4

Bible Study.—Required of all students.

Alumni and Alumnae. —Since the year 1870:		
Ministers.....	40	
Students now in Theological Seminaries.....	..	
Foreign Missionaries.....	3	
Women in Mission Work.....	..	
Other Christian Workers.....	..	
Teaching.....	43	
Law.....	33	
Medicine.....	15	
Other Professions.....	15	
Business, —; all Others, —.....	149	
Total.....		298



BLAIRSVILLE COLLEGE

BLAIRSVILLE COLLEGE, Blairsville, Pennsylvania

For Women. Organized 1851

Government.—By Twenty-one Trustees, who elect their successors.

Period covered by this Report.—September 1, 1911—June 4, 1912.

Faculty.—Number of Members 10

Property. —Land (Acres, 2)	\$10,000.00	
Buildings (No. of, 4)	34,500.00	
Furniture and Equipment	5,630.00	
Library: No. of Books, ———; Value	630.00	
Total Property	\$50,760.00	

Endowment		
Other Funds		

Total Assets		\$50,760.00
Less Net Indebtedness		26,180.00

Net Assets		\$24,580.00
----------------------	--	-------------

Gifts Received During Year

Expenses of Maintenance.—

Faculty Salaries, \$5,450; Other Salaries, \$800	\$6,250.00	
All other Expenses	5,836.25	
Total Expenses	\$12,086.25	

Income for Maintenance.—

From Endowment		
Student Fees	\$7,603.48	
Room Rent, ———; Boarding Department, ———		
Individuals, \$505; Other Sources, \$138.50	643.50	
Churches: Direct or through College Board	667.23	
College Board	1,000.00	
Total Income	9,914.21	

Deficit		\$2,172.04
-------------------	--	------------

Students.—College	26	
Preparatory	20	
Others (Special)	22	
Total	68	
Graduates 1911-12		7

Bible Study.—Required of all students.

Alumnæ.—Since the year 1853:

Ministers	
Students now in Theological Seminaries	
Foreign Missionaries	53	
Women in Mission Work	
Other Christian Workers	
Teaching	200	
Law	
Medicine	
Other Professions	
Business, and all Others	200	
Total	453	



Main Building

BUENA VISTA COLLEGE

BUENA VISTA COLLEGE, Storm Lake, Iowa

Co-educational. Organized 1891

Government.—By Thirty-six Trustees, elected by the Synod of Iowa.

Period covered by this Report.—July 1, 1911—June 15, 1912.

Faculty.—Number of Members. 17

Property.—Land (Acres, 4) \$13,800.00
 Buildings (No. of, 4; 2 are listed in Endowment) 35,000.00
 Furniture and Equipment 13,000.00
 Library: No. of Books, 7,500; Value 10,300.00
 Total Property \$72,100.00

Endowment.—
 Income Producing \$71,350.00
 Non-income Producing 10,000.00
 Total Endowment 81,350.00

Other Funds

Total Assets \$153,450.00
Less Net Indebtedness 27,120.00

Net Assets \$126,330.00

Gifts Received During Year.—For Equipment \$ 500.00
 Endowment 3,000.00
 Total \$3,500.00

Expenses of Maintenance.—
 Faculty Salaries \$14,191; Other Salaries, \$410 \$14,601.00
 All other Expenses 2,820.00
 Total Expenses \$17,421.00

Income for Maintenance.—
 From Endowment \$2,330.00
 Student Fees 7,011.65
 Room Rent, \$375; Boarding Department, — 375.00
 Individuals, \$1,400; Other Sources, \$525 1,925.00
 Churches: Direct or through College Board 2,725.00
 College Board
 Total Income 14,366.65

Deficit \$3,054.35

Students.—College 54
 Preparatory 35
 Others (Special) 114
 Total (Men, 108; Women, 95) 203
 Graduates 1911-12 (Men, 6; Women, 6) 12

Bible Study.—Required of all students.

Alumni and Alumnae.—Since the year 1891:
 Ministers 12
 Students now in Theological Seminaries 4
 Foreign Missionaries 1
 Women in Mission Work 2
 Other Christian Workers 4
 Teaching 73
 Law 10
 Medicine 7
 Other Professions 3
 Business, 130; all Others, 60 190
 Total, Less 1, counted twice 305



Main Hall



Rankin Hall of Science

CARROLL COLLEGE

CARROLL COLLEGE, Waukesha, Wisconsin

Co-educational. Organized 1846

Government.—By Twenty-four Trustees, elected by the Synod of Wisconsin.

Period covered by this Report.—June 1, 1911—June 1, 1912.

Faculty.—Number of Members 18

Property.—Land (Acres, 14) \$ 48,000.00
 Buildings (No. of, 6) 193,000.00
 Furniture and Equipment 11,000.00
 Library: No. of Books, 7,000; Value 10,000.00
 Total Property \$262,000.00

Endowment.—
 Income Producing \$261,582.64
 Non-income Producing 19,294.40
 Total Endowment 280,877.04

Other Funds

Total Assets \$542,877.04

Less Net Indebtedness (Reduced by \$1,615 surplus and \$3,000 pledges) 19,200.00

Net Assets \$523,677.04

Gifts Received During Year.—
 For Endowment \$8,500; Gift subject to Annuity \$3,500 \$12,000.00

Expenses of Maintenance.—
 Faculty Salaries, \$21,134; Other Salaries, \$300 \$21,434.00
 All other Expenses 8,400.52
 Total Expenses \$29,834.52

Income for Maintenance.—
 From Endowment \$ 6,592.22
 Student Fees 11,801.28
 Room Rent, \$2,250; Boarding Department, — 2,250.00
 Individuals, \$5,261.20; Other Sources, \$1,847.25 7,108.45
 Churches: Direct or through College Board 2,147.91
 College Board 1,550.00
 Total Income \$31,449.86

Surplus \$1,615.34

Students.—College 191
 Preparatory 40
 Other (Special) 53
 Total (Men, 164; Women, 120) 284
 Graduates 1911-12 (Men, 5; Women, 10) 15

Bible Study.—Required of all students.

Alumni and Alumnae.—Since the year 1857-60, 20; 1905-12, 66.
 Ministers 14
 Students now in Theological Seminaries 2
 Foreign Missionaries 2
 Women in Mission Work
 Other Christian Workers
 Teaching 46
 Law 3
 Medicine 1
 Other Professions 5
 Business, 17; all Others, 1 18
 Total, Less 5, counted twice 86



Old Centre



Main Building

CENTRE COLLEGE
OF CENTRAL UNIVERSITY OF KENTUCKY

CENTRE COLLEGE OF CENTRAL UNIVERSITY OF KENTUCKY, Danville, Kentucky

For Men. Organized 1819

Government.—By Twenty-four Trustees, who elect their successors.

Period covered by this Report.—June 1, 1911—June 1, 1912.

Faculty.—Number of Members 19

Property.—Land (Acres, 43) \$ 70,000.00
 Buildings (No. of, 10) 124,000.00
 Furniture and Equipment 22,000.00
 Library: No. of Books, 25,000; Value 20,000.00
 Total Property \$236,000.00

Endowment.—
 Income Producing \$477,950.00
 Non-income Producing 53,950.00
 (Pledges toward additional Endowment, \$19,000)
 Total Endowment 531,900.00

Other Funds.

Total Assets. \$767,900.00
Less Net Indebtedness.

Net Assets.

Gifts Received During Year.—For Building, \$20,000 (in Cash, \$9,649.69) \$20,000.00

Expenses of Maintenance.—
 Faculty Salaries, \$25,223.14; Other Salaries, \$5,855 \$31,078.14
 All other Expenses 10,397.79
 Total Expenses \$41,475.93

Income for Maintenance.—
 From Endowment \$23,146.17
 Student Fees 6,274.45
 Room Rent, \$929.95; Boarding Department, ——— 929.95
 Individuals, ———; Other Sources, \$4,924.89 4,924.89
 Churches: Direct or through College Board
 College Board
 Total Income 35,275.46

Deficit. \$6,200.47

Students.—College 97
 Preparatory 55
 Others (Special) 9
 Total 161
 Graduates 1911-12 17

Bible Study.—Required of all students.

Alumni—Since the year 1819:
 Ministers 251
 Students now in Theological Seminaries 6
 Foreign Missionaries 11
 Women in Mission Work
 Other Christian Workers
 Teaching 113
 Law 405
 Medicine 150
 Other Professions 63
 Business, 277; all Others, 146 423
 Total, Less 11, counted twice 1,411



A Group of Buildings



The Science Hall

COE COLLEGE

COE COLLEGE, Cedar Rapids, Iowa

Co-educational. Organized 1881

Government.—By Thirty Trustees, who elect their successors.

Period covered by this Report.—August 1, 1911—August 1, 1912.

Faculty.—Number of Members. 34

Property.—Land (Acres, 10) \$150,000.00
 Buildings (No. of, 7) 205,511.51
 Furniture and Equipment 60,376.92
 Library: No. of Books, 12,300; Value 13,000.00
 Total Property \$428,888.43

Endowment.—
 Income Producing \$420,000.00
 Non-income Producing 38,473.02
 Total Endowment 458,473.02

Other Funds

Total Assets \$887,361.45

Less Net Indebtedness 144,000.00

Net Assets \$743,361.45

Gifts Received During Year

Expenses of Maintenance.—

Faculty Salaries, \$32,532.02; Other Salaries,
 \$7,555.80 \$40,087.82
 All other Expenses 36,955.83
 Total Expenses \$77,043.65

Income for Maintenance.—

From Endowment \$24,573.27
 Student Fees 20,855.10
 Room Rent, \$1,224.50; Boarding Department, —
 Individuals, —; Other Sources, — 1,224.50
 Churches: Direct or through College Board
 College Board 50.00
 Total Income 46,702.87

Deficit \$30,340.78

Students.—College 267
 Preparatory 65
 Other (Special) 126
 Total (in College: Men, 109; Women, 158) 458
 Graduates 1911-12 (Men, 9; Women, 26) 35

Bible Study.—Required of Freshmen and Sophomores, elective with Juniors and Seniors. Students may major in Bible Study.

Alumni and Alumnae.—Since the year 1881:

Ministers 38
 Students now in Theological Seminaries 5
 Foreign Missionaries 15
 Women in Mission Work 6
 Other Christian Workers 6
 Teaching 127
 Law 22
 Medicine 20
 Other Professions 27
 Business, 34; all Others, 178 212
 Total 478



Memorial Hall

CUMBERLAND UNIVERSITY

CUMBERLAND UNIVERSITY, Lebanon, Tennessee

Co-educational. Organized 1842

Government.—By Nine Trustees, who elect their successors, but their election must be confirmed by the General Assembly.

Period covered by this Report.—June 15, 1911—June 15, 1912.

Faculty.—Number of Members. 22

Property. —Land (Acres, 51)	\$ 27,000.00	
Buildings (No. of, 5; 1 valued in Endmt. total)	130,000.00	
Furniture and Equipment	11,000.00	
Library: No. of Books, —; Value	15,000.00	
Total Property	\$183,000.00	

Endowment. —		
Income Producing	150,500.00	
((\$75,000 not productive for college maintenance)		

Other Funds

Total Assets	\$333,500.00	
Less Net Indebtedness	1,575.00	

Net Assets \$331,925.00

Gifts Received During Year.—For Equipment \$500.00

Expenses of Maintenance. —		
Faculty Salaries, \$11,810; Other Salaries, \$250	\$12,060.00	
All other Expenses	3,030.84	
Total Expenses	\$15,090.84	

Income for Maintenance. —		
From Endowment	\$1,423.98	
Student Fees	6,951.00	
Room Rent, \$1,350; Boarding Department, —	1,350.00	
Individuals, \$728; Other Sources, —	728.00	
Churches: Direct or through College Board	551.63	
College Board	2,975.85	
Total Income	13,980.46	

Deficit \$1,110.38

Students. —College	77	
Preparatory	60	
Others (Special)	231	
Total (Men, 258; Women, 110)	368	
Graduates 1911-12 (Men, 8; Women, 1)	9	

Bible Study.—Required of all regular students.

Alumni and Alumnae. —Since the year 1842:		
Ministers	175	
Students now in Theological Seminaries	10	
Foreign Missionaries	8	
Women in Mission Work	
Other Christian Workers	
Teaching	238	
Law	159	
Medicine	73	
Other Professions	92	
Business, 150; all Others, 30	180	
Total, Less 178, counted twice	757	



DAVIS AND ELKINS COLLEGE

DAVIS AND ELKINS COLLEGE, Elkins, West Virginia

Co-educational. Organized 1904

Government.—By Eighteen Trustees, who elect as their successors candidates nominated by the Presbyteries of Lexington and Winchester of the Presbyterian Church in the United States, and the Synod of West Virginia of the Presbyterian Church in the United States of America.

Period covered by this Report.—July 1, 1911—June 30, 1912.

Faculty.—Number of Members..... 10

Property.—Land (Acres, —)..... \$25,000.00
 Buildings (No. of, 2)..... 70,000.00
 Furniture and Equipment..... 3,360.00
 Library: No. of Books, —; Value..... 2,700.00
 Total Property..... \$101,060.00

Endowment.—
 Income Producing..... 100,000.00

Other Funds.....

Total Assets..... \$201,060.00

Less Net Indebtedness..... 1,111.31

Net Assets..... \$199,948.69

Gifts Received During Year.....

Expenses of Maintenance.—
 Faculty Salaries, \$8,118; Other Salaries, \$788..... \$8,905.00
 All other Expenses..... 4,687.36
 Total Expenses..... \$13,593.36

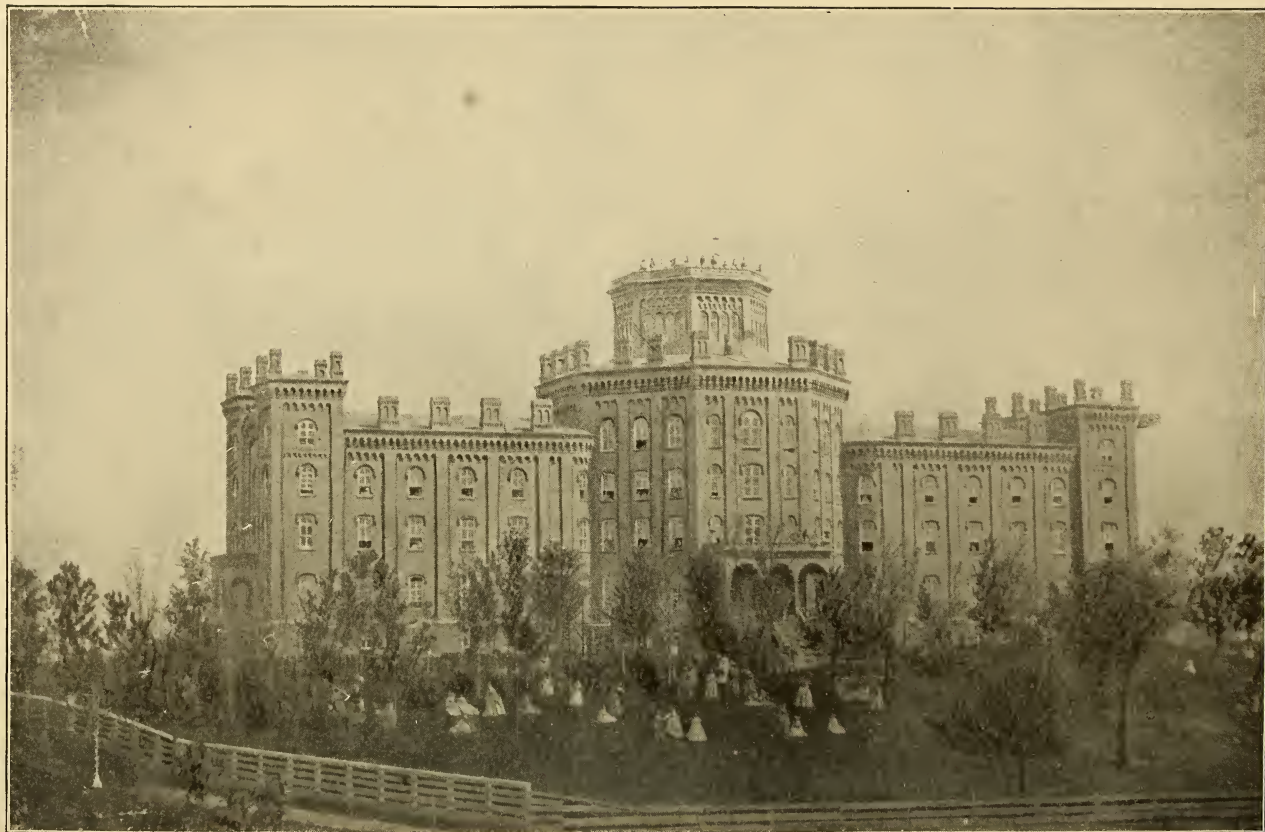
Income for Maintenance.—
 From Endowment.....
 Student Fees..... \$3,166.75
 Room Rent, \$724.31; Boarding Department, — 724.31
 Individuals, \$6,750; Other Sources, \$430..... 7,180.00
 Churches: Direct or through College Board..... 404.28
 College Board..... 1,500.00
 Total Income..... 12,975.34

Deficit..... \$618.02

Students.—College..... 30
 Preparatory..... 22
 Other (Includes Summer School Students)..... 91
 Total, Regular (Men, 57; Women, 33)..... 90
 Graduates 1911-12 (Men, 3; Women, —)..... 3

Bible Study.—Required of all regular students.

Alumni and Alumnae.—Since the year 1904:
 Ministers.....
 Students now in Theological Seminaries.....
 Foreign Missionaries.....
 Women in Mission Work.....
 Other Christian Workers.....
 Teaching..... 2
 Law..... 1
 Medicine.....
 Other Professions.....
 Business, 3; all Others, 1..... 4
 Total..... 7



ELMIRA COLLEGE

ELMIRA COLLEGE, Elmira, New York

For Women. Organized 1855

Government.—By Nineteen Trustees, who elect their successors.

Period covered by this Report.—June 1, 1911—January 1, 1912.

Faculty.—Number of Members (10 women; 7 men)..... 17

Property. —Land (Acres, —).....	\$ 60,000.00	
Buildings (No. of, 6).....	170,000.00	
Furniture and Equipment.....	48,500.00	
Library: No. of Books, 10,600; Value.....	10,600.00	
Total Property.....	\$289,100.00	

Endowment. —		
Income Producing.....	240,049.16	

Other Funds.		
---------------------------	--	--

Total Assets.		\$529,149.16
----------------------------	--	--------------

Less Value of buildings given in endowment.....		114,306.66
---	--	------------

Net Assets.		\$414,842.50
--------------------------	--	--------------

Gifts Received During Year. —For Building.....		\$22,657.11
---	--	-------------

Expenses of Maintenance.—

Faculty Salaries, \$24,924; Other Salaries, \$7,500....	\$32,424.00	
All other Expenses.....	18,696.08	
Total Expenses.....	\$51,110.08	

Income for Maintenance.—

From Endowment.....	\$ 5,599.49	
Student Fees.....	21,758.68	
Room Rent, ———; Boarding Department.....	30,762.50	
Individuals, ———; Other Sources.....		
Churches: Direct or through College Board.....		
College Board.....		
Total Income.....	\$58,120.67	

Surplus.		\$7,010.59
-----------------------	--	------------

Students. —College.....	205	
Preparatory.....		
Others (Special).....		
Total.....	205	
Graduates 1911-12.....		43

Bible Study.—Required of all students.

Alumnæ.—Since the year 1855:

Ministers.....		
Students now in Theological Seminaries.....		
Foreign Missionaries.....		
Women in Mission Work.....		
Other Christian Workers.....		
Teaching.....		
Law.....		
Medicine.....		
Other Professions.....		
Business, —; all Others, —.....		
Total.....		800



The College and Anderson Memorial Library

THE COLLEGE OF EMPORIA

THE COLLEGE OF EMPORIA, Emporia, Kansas

Co-educational. Organized 1882

Government.—By Twenty-one Trustees, elected by the Synod of Kansas.

Period covered by this Report.—June 15, 1911—June 15, 1912.

Faculty.—Number of Members. 21

Property. —Land (Acres, 38)	\$ 25,000.00	
Buildings (No. of, 5)	180,000.00	
Furniture and Equipment	20,000.00	
Library: No. of Books, 12,000; Value	10,000.00	
Total Property		\$235,000.00

Endowment. —		
Income Producing	\$30,141.56	
Non-income Producing	81,000.00	
Total Endowment		111,141.56

Other Funds

Total Assets		\$346,141.56
Less Net Indebtedness		27,650.00

Net Assets \$318,491.56

Gifts Received During Year.—For Building, \$23,060; Endowment, \$4,561.91 (Received in Cash, \$25,621.91) \$27,621.91

Expenses of Maintenance. —		
Faculty Salaries, \$14,400; Other Salaries, \$1,850	\$16,250.00	
All other Expenses	14,342.15	
Total Expenses		\$30,592.15

Income for Maintenance. —		
From Endowment	\$ 650.48	
Student Fees	5,035.00	
Room Rent, —; Boarding Department, —	
Individuals, \$8,320; Other Sources, \$6,500	14,820.00	
Churches: Direct or through College Board	7,330.12	
College Board	3,000.15	
Total Income		30,835.75

Surplus \$243.60

Students. —College	152	
Preparatory	44	
Others (69 short time)	117	
Total, Regular (Men, 109; Women, 135)		244
Graduates 1911-12 (Men, 16; Women, 16)		32

Bible Study.—Required of all students.

Alumni and Alumnae. —Since the year 1882:		
Ministers	50	
Students now in Theological Seminaries	10	
Foreign Missionaries	14	
Women in Mission Work	5	
Other Christian Workers	5	
Teaching	94	
Law	9	
Medicine	14	
Other Professions	11	
Business, 33; all Others, 88	121	
Total, Less 16, counted twice		317



In the Quadrangle

GROVE CITY COLLEGE

GROVE CITY COLLEGE, Grove City, Pennsylvania

Co-educational. Organized 1884

Government.—By Thirty Trustees, who elect their successors.

Period covered by this Report.—June 12, 1911—June 11, 1912.

Faculty.—Number of Members. 25

Property. —Land (Acres, 40)	\$133,000.00	
Buildings (No. of, 10)	274,000.00	
Furniture and Equipment	20,000.00	
Library: No. of Books, 8,000; Value	10,000.00	
Total Property		\$437,000.00

Endowment. —		
Income Producing		75,000.00
(Pledges toward additional Endowment, \$90,000)		
Other Funds		

Total Assets		\$512,000.00
Less Net Indebtedness		55,300.00

Net Assets \$456,700.00

Gifts Received During Year

Expenses of Maintenance. —		
Faculty Salaries, \$24,570; Other Salaries, ———	\$24,570.00	
All other Expenses	17,832.13	
Total Expenses		\$42,402.13

Income for Maintenance. —		
From Endowment	\$ 4,250.00	
Student Fees	37,599.55	
Room Rent, ———; Boarding Department, ———		
Individuals, \$1,500; Other Sources, \$1,550	3,050.00	
Churches: Direct or through College Board		
College Board	537.50	
Total Income		45,437.05

Surplus \$3,034.92

Students. —College	284	
Preparatory	140	
Others (142 are Short Term)	490	
Total, Regular (Men $\frac{2}{3}$; Women, $\frac{1}{3}$)		772
Graduates 1911-12 (Men, 26; Women, 13)		39

Bible Study.—Required of all regular students.

Alumni and Alumnae. —Since the year 1884:		
Ministers	290	
Students now in Theological Seminaries	34	
Foreign Missionaries	35	
Women in Mission Work	40	
Other Christian Workers	
Teaching	600	
Law	325	
Medicine	310	
Other Professions	
Business, 2,900; all Others, 1,400	4,300	
Total		5,934



Classis Hall

HANOVER COLLEGE

HANOVER COLLEGE, Hanover, Indiana

Co-educational. Organized 1829

Government.—By Thirty-two Trustees, who elect their successors.

Period covered by this Report.—June 1, 1911—June 1, 1912.

Faculty.—Number of Members. 17

Property.—Land (Acres, 40) \$ 5,200.00
 Buildings (No. of, 10; 3 are valued in Endowment) 116,000.00
 Furniture and Equipment 8,000.00
 Library: No. of Books, 22,000; Value 25,000.00
 Total Property. \$154,200.00

Endowment.—
 Income Producing 225,591.50
Other Funds. 17,500.00

Total Assets. \$397,291.50
Less Net Indebtedness. 5,000.00

Net Assets. \$392,291.50

Gifts Received During Year.

Expenses of Maintenance.—
 Faculty Salaries, \$14,834.75; Other Salaries, \$1,690 \$16,524.75
 All other Expenses 4,823.78
 Total Expenses (13 Months) \$21,348.53

Income for Maintenance.—
 From Endowment \$11,804.03
 Student Fees 5,646.20
 Room Rent, \$968.07; Boarding Department, ——— 968.07
 Individuals, \$1,415; Other Sources, ——— 1,415.00
 Churches: Direct or through College Board 32.80
 College Board 50.00
 Total Income (12 Months) 19,916.19

Deficit (Due to paying 13 months' expenses out of 12 months' income) \$1,432.34

Students.—College 194
 Preparatory 61
 Total (Men, 140; Women, 115) 255
 Graduates 1911-12 (Men, 11; Women, 8) 19

Bible Study.—Required of all students.

Alumni and Alumnæ.—Since the year 1829:
 Ministers 339
 Students now in Theological Seminaries 4
 Foreign Missionaries 33
 Women in Mission Work 6
 Other Christian Workers 1
 Teaching 183
 Law 135
 Medicine 59
 Other Professions 38
 Business, 86; all Others, 87 173
 Total, Less 27, counted twice 944



HASTINGS COLLEGE

HASTINGS COLLEGE, Hastings, Nebraska

Co-educational. Organized 1873

Government.—By Twenty-seven Trustees, elected by the Synod of Nebraska.

Period covered by this Report.—June 1, 1911—June 1, 1912

Faculty.—Number of Members..... 13

Property.—Land (Acres, 25)..... \$22,000.00
 Buildings (No. of, 6)..... 76,650.85
 Furniture and Equipment..... 8,930.75
 Library: No. of Books, 17,445; Value..... 7,638.03
 Total Property..... \$115,219.63

Endowment.—
 Income Producing..... \$114,437.88
 Non-income Producing..... 4,000.00
 (Pledges toward additional Endowment, \$22,000)
 Total Endowment..... 118,437.88

Other Funds.....

Total Assets..... \$233,657.51
Less Net Indebtedness..... 22,590.92

Net Assets..... \$211,066.59

Gifts Received During Year.—
 For Land, ———; Building, \$4,020.71..... \$4,020.71
 Equipment, \$54.65; Endowment, \$5,200..... 5,254.65
 Total..... \$9,275.36

Expenses of Maintenance.—
 Faculty Salaries, \$13,720; Other Salaries, \$6,095.. \$19,815.00
 All other Expenses..... 8,349.24
 Total Expenses..... \$28,164.24

Income for Maintenance.—
 From Endowment..... \$6,383.93
 Student Fees..... 3,775.00
 Room Rent, ———; Boarding Department, ——— 1,026.50
 Individuals, \$2,266.50; Other Sources, \$2,221.18... 4,487.68
 Churches: Direct or through College Board..... 2,182.48
 College Board..... 3,520.91
 Total Income..... 21,376.50

Deficit..... \$6,787.74

Students.—College..... 63
 Preparatory..... 29
 Others (Special)..... 75
 Total (Men, 76; Women, 91)..... 167
 Graduates 1911-12 (Men, 1; Women, 7)..... 8

Bible Study.—Required of all students.

Alumni and Alumnae.—Since the year 1873:
 Ministers..... 18
 Students now in Theological Seminaries..... 1
 Foreign Missionaries..... 3
 Women in Mission Work..... ..
 Other Christian Workers..... ..
 Teaching..... 37
 Law..... 5
 Medicine..... 6
 Other Professions..... 13
 Business, —; all Others..... 55
 Total..... 138



HENRY KENDALL COLLEGE

HENRY KENDALL COLLEGE, Tulsa, Oklahoma

Co-educational. Organized 1894

Government.—By Seventeen Trustees, elected by the Synod of Oklahoma.

Period covered by this Report.—June 1, 1911—June 1, 1912.

Faculty.—Number of Members 15

Property. —Land (Acres, 21)	\$50,000.00	
Buildings (No. of, 3)	86,000.00	
Furniture and Equipment	5,300.00	
Library: No. of Books, 3,500; Value	2,000.00	
Total Property	\$143,300.00	

Endowment. —		
Income Producing		92,500.00

Other Funds

Total Assets		\$235,800.00
Less Net Indebtedness		34,800.00

Net Assets \$201,000.00

Gifts Received During Year

Expenses of Maintenance. —		
Faculty Salaries, \$12,275; Other Salaries, \$1,110	\$13,385.00	
All other Expenses	3,374.00	
Total Expenses	\$16,759.00	

Income for Maintenance. —		
From Endowment	\$7,800.45	
Student Fees	4,566.00	
Room Rent, ———; Boarding Department, ———		
Individuals, \$45.50; Other Sources, \$630	675.50	
Churches: Direct or through College Board	444.55	
College Board (Total Grant, \$1,000)	500.00	
Total Income	13,995.50	

Deficit \$2,763.50

Students. —College	10	
Preparatory	55	
Others (Special)	86	
Total (Men, 43; Women, 108)	151	
Graduates 1911-12 (Men, 2; Women, —)		2

Bible Study.—Required of all regular students.

Alumni and Alumnae. —Since the year 1898:		
Ministers	
Students now in Theological Seminaries	1	
Foreign Missionaries	
Women in Mission Work	
Other Christian Workers	
Teaching	9	
Law	2	
Medicine	
Other Professions	
Business, —; all Others, 19	19	
Total	31	



Old University Building



New College Hall

HIGHLAND COLLEGE

HIGHLAND COLLEGE, Highland, Kansas

(Legal Name, Highland University Co.)

Co-educational. Organized 1857

Government.—By Twenty-seven Trustees, elected by the Synod of Kansas.

Period covered by this Report.—September, 1911—June, 1912.

Faculty.—Number of Members. 14

Property. —Land (Acres, 13).....	\$20,000.00	
Buildings (No. of, 4).....	51,000.00	
Furniture and Equipment.....	8,000.00	
Library: No. of Books, ———; Value.....	5,000.00	
Total Property.....	\$84,000.00	

Endowment.—Income Producing..... 40,000.00

Other Funds......

Total Assets...... \$124,000.00

Less Net Indebtedness...... 11,727.64

Net Assets...... \$112,272.36

Gifts Received During Year.—

 For Land, \$300; Equipment, \$1,800..... \$2,100.00

Expenses of Maintenance.—

 Faculty Salaries, \$5,700; Other Salaries, \$50..... \$5,750.00

 All other Expenses..... 4,565.00

 Total Expenses..... \$10,315.00

Income for Maintenance.—

 From Endowment..... \$2,338.80

 Student Fees..... 2,837.60

 Room Rent, \$46.50; Boarding Department, ——— 46.50

 Individuals, \$1,817.20; Other Sources, \$2,020.97... 3,838.17

 Churches: Direct or through College Board..... 400.00

 College Board.....

 Total Income..... 9,461.07

Deficit...... \$853.93

Students.—College..... 40

 Preparatory..... 75

 Others (Special)..... 75

 Total (Men, 93; Women, 97)..... 190

 Graduates 1911-12 (Men, 6; Women, 6)..... 12

Bible Study.—Required of all regular students.

Alumni and Alumnae.—Since the year 1857:

 Ministers..... 27

 Students now in Theological Seminaries..... 2

 Foreign Missionaries..... 13

 Women in Mission Work..... 5

 Other Christian Workers..... 1

 Teaching..... 30

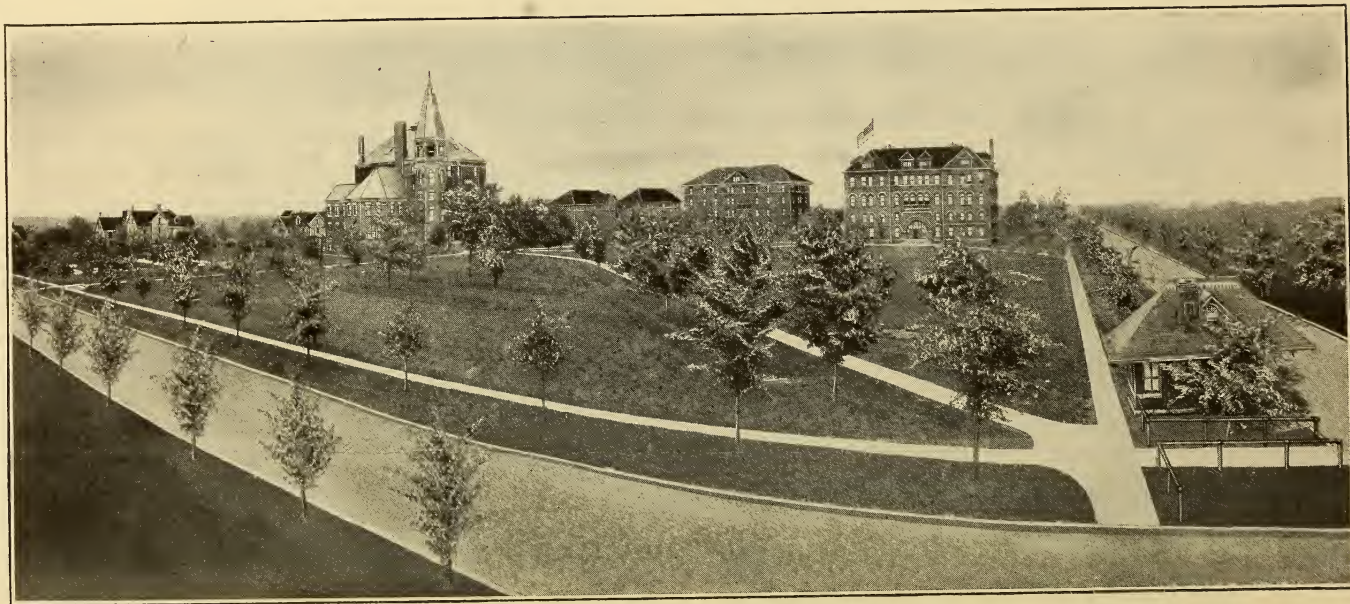
 Law..... 7

 Medicine..... 6

 Other Professions..... 11

 Business, 10; all Others, 23..... 33

 Total, Less 17, counted twice..... 118



HIGHLAND PARK COLLEGE AND GROUNDS

HIGHLAND PARK COLLEGE, Des Moines, Iowa

Co-educational. Organized 1892

Government.—By Fifteen Trustees, who elect their successors.

Period covered by this Report.—Year ending July 1, 1912.

Faculty.—Number of Members 30

Property. —Land (Acres, 13)	}		
Buildings (No. of, 9)		\$184,302.00	
Furniture and Equipment		68,835.00	
Library: No. of Books, 7,000; Value		5,300.00	
Total Property			\$258,437.00

Endowment.—

Income Producing	14,532.53
----------------------------	-----------

Other Funds.—Bills Receivable and Home Study Contracts 14,532.53

Total Assets.	\$272,969.53
Less Net Indebtedness. —Bonds, \$165,000; Bills, \$17,705; Loan, \$15,000	197,705.00

Net Assets. \$75,264.53

Gifts Received During Year.—

Equipment, \$10,000; Building, \$20,000	\$30,000.00
---	-------------

Expenses of Maintenance.—

Faculty Salaries, \$56,000; Other Salaries, \$21,548.48	\$77,548.48	
All other Expenses, includes improvements and new equipment	75,899.29	
Total Expenses		\$153,447.77

Income for Maintenance.—

From Endowment	
Student Fees, Tuition	\$72,365.99
Room Rent, \$17,900.92; Boarding Department, \$39,119.53	57,020.45
Individuals, —; Other Sources, \$16,792.80	16,792.80
Churches: Direct or through College Board	
College Board	
Total Income	146,179.24

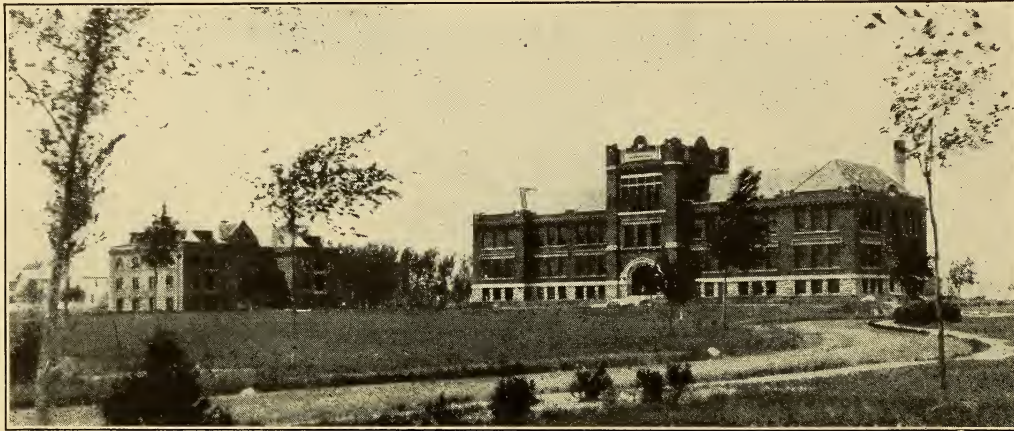
Deficit incurred by reason of improvements, etc. \$7,268.53

Students. —College	45	
Preparatory	15	
Others: 757 Technical; 185 Music	942	
Total (Men, 765; Women, 237)		1,002
Graduates 1911-12 (Men, 145; Women, 130)		275

Bible Study.—Elective.

Alumni and Alumnae.—

Ministers	
Students now in Theological Seminaries	
Foreign Missionaries	
Women in Mission Work	
Other Christian Workers	
Teaching	
Law	
Medicine	
Other Professions	
Business, —; all Others, —	
Total	



HURON COLLEGE

HURON COLLEGE, Huron, South Dakota

Co-educational. Organized 1883

Government.—By Twenty Trustees, elected by the Synod of South Dakota.

Period covered by this Report.—September 1, 1911—August 31, 1912.

Faculty.—Number of Members. 17

Property. —Land (Acres, 15)	\$ 50,000.00	
Buildings (No. of, 3)	184,296.13	
Furniture and Equipment	12,641.98	
Library: No. of Books, 7,600; Value	6,080.00	
Total Property	\$253,018.11	

Endowment. —		
Income Producing	\$358,526.56	
Non-income Producing	167,102.44	
Total Endowment	525,629.00	

Other Funds

Total Assets	\$778,647.11	
Less Net Indebtedness	33,422.11	

Net Assets \$745,225.00

Gifts Received During Year.—Endowment \$349,352.09

Expenses of Maintenance. —		
Faculty Salaries, \$17,211; Other Salaries, \$4,817	\$22,028.00	
All other Expenses	26,919.73	
Total Expenses	\$48,947.73	

Income for Maintenance. —		
From Endowment	\$ 7,959.50	
Student Fees	8,136.57	
Room Rent, \$1,394.50; Boarding Department, —	1,394.50	
Individuals, \$9,435.75; Other Sources, \$17,263.81	26,699.56	
Churches: Direct or through College Board	1,007.60	
College Board	3,750.00	
Total Income	48,947.73	

Deficit or Surplus

Students. —College	74	
Preparatory	64	
Others (Special)	346	
Total (Men, 156; Women, 328)	484	
Graduates 1911-12 (Men, 8; Women, 7)	15	

Bible Study.—Required of all students.

Alumni and Alumnae. —Since the year 1883:		
Ministers	13	
Students now in Theological Seminaries	6	
Foreign Missionaries	4	
Women in Mission Work	
Other Christian Workers	1	
Teaching	20	
Law	4	
Medicine	6	
Other Professions	11	
Business, 1; all Others, —	1	
Total, Less 3, counted twice	83	



Sterry Hall



Finney Hall

THE COLLEGE OF IDAHO

THE COLLEGE OF IDAHO, Caldwell, Idaho

Co-educational. Organized 1891

Government.—By Thirteen Trustees, who elect their successors, two-thirds of whom must be members of the Presbyterian Church.

Period covered by this Report.—June 15, 1911—June 15, 1912.

Faculty.—Number of Members. 12

Property.—Land (Acres, 25) \$17,000.00
 Buildings (No. of, 4) 82,370.00
 Furniture and Equipment 8,439.00
 Library: No. of Books, 2,500; Value 2,200.00
 Total Property \$110,009.00

Endowment.—
 Income Producing 52,654.93
 (Pledges toward additional Endowment, \$21,000)

Other Funds 29,168.85

Total Assets \$191,832.78

Less Net Indebtedness 1,858.27

Net Assets \$189,974.51

Gifts Received During Year.—

Building, \$10,000; Equipment, \$956.70 \$10,956.70

Expenses of Maintenance.—

Faculty Salaries, \$9,800; Other Salaries, \$328 \$10,128.00

All other Expenses, \$5,449.71; Deficit of 1910-11, \$5,300 10,749.71

Total Expenses \$20,877.71

Income for Maintenance.—

From Endowment \$ 1,938.84

Student Fees 1,730.00

Room Rent, \$298.25; Boarding Department, ——— 298.25

Individuals, \$11,557; Other Sources, \$340.10 11,897.10

Churches: Direct or through College Board 304.01

College Board 3,235.40

Total Income 19,403.60

Deficit \$1,474.11

Students.—College 32

Preparatory 39

Others (Special) 46

Total (Men, 43; Women, 74) 117

Graduates 1911-12 (Men, 5; Women, 9) 14

Bible Study.—Required of all regular students.

Alumni and Alumnae.—Since the year 1891:

Ministers 4

Students now in Theological Seminaries

Foreign Missionaries

Women in Mission Work

Other Christian Workers

Teaching 35

Law 2

Medicine 3

Other Professions 8

Business, 40; all Others, 123 163

Total 215



Chapel

Sturtevant Hall

ILLINOIS COLLEGE

ILLINOIS COLLEGE, Jacksonville, Illinois

Co-educational. Organized 1829

Government.—By Twenty Trustees, who elect their successors. A majority must be members of the Presbyterian Church.

Period covered by this Report.—May 15, 1911—May 15, 1912.

Faculty.—Number of Members..... 19

Property. —Land (Acres, 21).....	\$112,735.00	
Buildings (No. of, 11).....	177,400.00	
Furniture and Equipment.....	16,155.00	
Library: No. of Books, 15,000; Value.....	9,000.00	
Total Property.....		\$315,290.00

Endowment. —		
Income Producing.....	\$382,267.39	
Non-income Producing.....	3,159.40	
Total Endowment.....		385,426.79

Other Funds.....

Total Assets		\$700,716.79
Less Net Indebtedness

Net Assets.....

Gifts Received During Year.....

Expenses of Maintenance. —		
Faculty Salaries, \$13,895; Other Salaries, \$1,200... ..	\$15,095.00	
All other Expenses.....	13,254.86	
Total Expenses.....		\$28,349.86

Income for Maintenance. —		
From Endowment.....	\$18,579.77	
Student Fees.....	7,415.17	
Room Rent, \$706.50; Boarding Department, \$213.38.....	919.88	
Individuals, —; Other Sources, \$2,184.60....	2,184.60	
Churches: Direct or through College Board.....	47.73	
College Board.....	
Total Income.....		29,147.15

Surplus		\$797.29
----------------------	--	----------

Students. —College.....	62	
Preparatory.....	86	
Others (Special).....	150	
Total (Men, 141; Women, 157).....		298
Graduates 1911-12 (Men, 15; Women, 4).....		19

Bible Study.—Required of all students.

Alumni and Alumnae. —Since the year 1829:		
Ministers.....	114	
Students now in Theological Seminaries.....	..	
Foreign Missionaries.....	..	
Women in Mission Work.....	..	
Other Christian Workers.....	..	
Teaching.....	83	
Law.....	140	
Medicine.....	120	
Other Professions.....	..	
Business, 101; all Others, 271.....	372	
Total.....		829



Main Building

DECATUR COLLEGE AND INDUSTRIAL SCHOOL OF JAMES MILLIKIN UNIVERSITY

JAMES MILLIKIN UNIVERSITY
DECATUR COLLEGE AND INDUSTRIAL SCHOOL
Decatur, Illinois

Co-educational. Organized 1901

Government.—By Fifteen Trustees, elected by the Synods of Indiana, Illinois, and Iowa.

Period covered by this Report.—July 1, 1911—July 1, 1912.

Faculty.—Number of Members 65

Property.—Land (Acres, 35) \$100,000.00
 Buildings (No. of, 7) 422,700.00
 Furniture and Equipment 61,568.19
 Library: No. of Books, 6,800; Value 9,000.00
 Total Property \$593,268.19

Endowment.—
 Income Producing 210,615.44

Other Funds

Total Assets \$803,883.63

Less Net Indebtedness

Net Assets

Gifts Received During Year

Expenses of Maintenance.—
 Faculty Salaries, \$64,484.09; Other Salaries,
 \$3,964.57 \$68,448.66
 All other Expenses 20,763.11
 Total Expenses \$89,211.77

Income for Maintenance.—
 From Endowment, \$11,004.84; James Millikin Es-
 tate, \$35,250.59 \$46,255.43
 Student Fees 41,951.17
 Room Rent, —; Boarding Department, \$159.31
 159.31
 Individuals, \$50; Other Sources, \$313.33 363.33
 Churches: Direct or through College Board
 College Board 482.53
 Total Income 89,211.77

Deficit

Students.—College 419
 Preparatory 175
 Others (Special) 507
 Total (Men, 295; Women, 806) 1,101
 Graduates 1911-12 (Men, 12; Women, 29) 41

Bible Study.—Given throughout Preparatory and College year, open to all but elective.

Alumni and Alumnae.—Since the year 1901:
 Ministers 4
 Students now in Theological Seminaries 1
 Foreign Missionaries 2
 Women in Mission Work 1
 Other Christian Workers 4
 Teaching 66
 Law 4
 Medicine 2
 Other Professions 34
 Business, 39; all Others, 32 71
 Total, Less 3, counted twice 186



Chapel Hall

University Hall

LINCOLN COLLEGE OF JAMES MILLIKIN UNIVERSITY

JAMES MILLIKIN UNIVERSITY
LINCOLN COLLEGE
Lincoln, Illinois

Co-educational. Organized 1865

Government.—By a Board of Nine Managers which acts for the Board of Trustees of James Millikin University. The Board of Trustees of James Millikin University is elected by the Synods of Iowa, Illinois, and Indiana.

Period covered by this Report.—June, 1911—June, 1912.

Faculty.—Number of Members. 15

Property. —Land (Acres, 11)	\$20,000.00	
Buildings (No. of 2)	80,000.00	
Furniture and Equipment	5,000.00	
Library: No. of Books, 7,000; Value	4,000.00	
Total Property		\$109,000.00

Endowment. —Income Producing		118,166.31
Other Funds. —Annuity		10,000.00

Total Assets.		\$237,166.31
Less Net Indebtedness.		

Net Assets.

Gifts Received During Year (Subject to Annuities) \$10,000.00

Expenses of Maintenance. —		
Faculty Salaries, \$6,850; Other Salaries, \$670.32	\$7,520.32	
All other Expenses	1,434.02	
Total Expenses		\$8,954.34

Income for Maintenance. —		
From Endowment	\$5,496.68	
Student Fees	2,197.20	
Room Rent, —; Boarding Department, —		
Individuals, \$25; Other Sources, \$863.52	888.52	
Churches: Direct or through College Board		
College Board	482.53	
Total Income		9,064.93

Surplus. \$110.59

Students. —College	54	
Preparatory	68	
Others (Special)	186	
Total (Men, —; Women, —)		308
Graduates 1911-12 (Men, 2; Women, 8)		10

Bible Study.—Required of all regular students.

Alumni and Alumnae. —Since the year 1865:		
Ministers	44	
Students now in Theological Seminaries	2	
Foreign Missionaries	3	
Women in Mission Work	5	
Other Christian Workers	2	
Teaching	61	
Law	43	
Medicine	17	
Other Professions	24	
Business, 50; all Others, 150	200	
Total		401



Library Hall



Sandford Dormitory

JAMESTOWN COLLEGE

JAMESTOWN COLLEGE, Jamestown, North Dakota

Co-educational. Organized 1883; Closed 1893; Reopened 1909

Government.—By Eighteen Trustees, who elect their successors, but their election must be approved by the Synod of North Dakota.

Period covered by this Report.—July 1, 1911—July 1, 1912.

Faculty.—Number of Members..... 16

Property. —Land (Acres, 108 campus, 80 of other land) \$ 16,000.00		
Buildings (No. of, 5).....	103,000.00	
Furniture and Equipment.....	5,800.00	
Library: No. of Books, 2,250; Value.....	2,200.00	
Total Property.....		\$127,000.00

Endowment. —		
Income Producing.....	\$103,000.00	
Non-income Producing.....	3,500.00	
(Pledges toward additional Endowment, \$41,000)		
Total Endowment.....		106,500.00

Other Funds.....

Total Assets		\$233,500.00
Less Net Indebtedness		

Net Assets.....

Gifts Received During Year. —		
For Land, ———; Building, \$10,000.....	\$10,000.00	
Equipment, \$2,000; Endowment, \$20,000.....	22,000.00	
Total (Received in Cash, \$18,000).....		\$32,000.00

Expenses of Maintenance. —		
Faculty Salaries, \$12,904; Other Salaries, \$413.69..	\$13,317.69	
All other Expenses.....	10,488.67	
Total Expenses.....		\$23,806.36

Income for Maintenance. —		
From Endowment.....	\$1,788.45	
Student Fees.....	5,109.75	
Room Rent, \$1,699; Boarding Department, \$991.57	2,690.57	
Individuals, \$8,883.87; Other Sources, ———.....	8,883.87	
Churches: Direct or through College Board.....	3,534.07	
College Board.....	2,000.00	
Total Income.....		24,006.71

Surplus..... \$200.35

Students. —College.....		76	
Preparatory.....		42	
Others (Special).....		47	
Total (Men, 76; Women, 89).....			165
Graduates 1911-12 (Men, 2; Women, 2).....			4

Bible Study.—Required of all students.

Alumni and Alumnae.—Since the year 1909:

Ministers.....	..	
Students now in Theological Seminaries.....	..	
Foreign Missionaries.....	..	
Women in Mission Work.....	..	
Other Christian Workers.....	..	
Teaching.....	..	
Law.....	..	
Medicine.....	..	
Other Professions.....	..	
Business, —; all Others, —.....	..	
Total.....		4



KENTUCKY COLLEGE FOR WOMEN

KENTUCKY COLLEGE FOR WOMEN

Danville, Kentucky

Organized 1854

Government.—By Twenty Trustees, who elect their successors, two-thirds of whom must be members of the Presbyterian Church.

Period covered by this Report.—September 1, 1911—September 1, 1912.

Faculty.—Number of Members..... 23

Property. —Land (Acres, 18).....	\$41,645.06	
Buildings (No. of, 5).....	79,044.42	
Furniture and Equipment.....	5,187.25	
Library: No. of Books, 411; Value.....	524.23	
Total Property.....		\$126,400.96

Endowment.—
Other Funds.....

Total Assets..... \$126,400.96

Less Net Indebtedness.....

Net Assets.....

Gifts Received During Year.....

Expenses of Maintenance. —		
Faculty Salaries, \$9,970; Other Salaries, \$972.90...	\$10,942.90	
All other Expenses.....	6,583.03	
Total Expenses.....		\$17,525.93

Income for Maintenance. —		
From Endowment.....		
Student Fees.....	\$13,796.35	
Room Rent, ———; Boarding Department, \$882.80	882.80	
Individuals, \$100; Other Sources, ———	100.00	
Churches: Direct or through College Board.....	455.25	
College Board.....	1,500.00	
Total Income.....		16,734.40

Deficit..... \$791.53

Students. —College.....	73	
Preparatory.....	46	
Others (Special).....	116	
Total.....		235
Graduates 1911-12.....		20

Bible Study.—Required of all regular students in the College Department

Alumnæ. —Since the year 1900:		
Ministers.....		
Students now in Theological Seminaries.....		
Foreign Missionaries.....		
Women in Mission Work.....	10	
Other Christian Workers.....		
Teaching.....	42	
Law.....		
Medicine.....		
Other Professions.....		
Business and all Others.....	158	
Total.....		210



South College

LAFAYETTE COLLEGE

LAFAYETTE COLLEGE, Easton, Pennsylvania

For Men. Organized 1832

Government.—By Twenty-nine Trustees, who elect their successors, but their election must be approved by the Synod of Pennsylvania.

Period covered by this Report.—July 1, 1911—June 30, 1912.

Faculty.—Number of Members..... 55

Property.—Land (Acres, 70)..... \$158,573.99
 Buildings (No. of 22)..... 732,726.84
 Furniture and Equipment..... 192,988.74
 Library: No. of Books, 45,000; Value..... 58,694.03
 Total Property..... \$1,142,983.60

Endowment.—Income Producing..... 656,506.12
Other Funds.....

Total Assets..... \$1,799,489.72
Less Net Indebtedness (Purchase of land and expense of buildings).. 95,357.25

Net Assets..... \$1,704,132.47

Gifts Received During Year.—

For Building, \$20,229.60; For Endowment, \$9,260..... \$29,489.60

Expenses of Maintenance.—

Faculty Salaries, \$62,992.50; Other Salaries, \$5,770. \$68,762.50
 All Other Expenses..... 57,309.80
 Total Expenses..... \$126,072.30

Income for Maintenance.—

From Endowment..... \$33,860.46
 Student Fees..... 81,783.38
 Room Rent, ———; Boarding Department, ———
 Individuals, \$4,248.01; Other Sources, \$808.27.... 5,056.28
 Churches: Direct or through College Board.....
 College Board.....
 Total Income..... 120,709.12

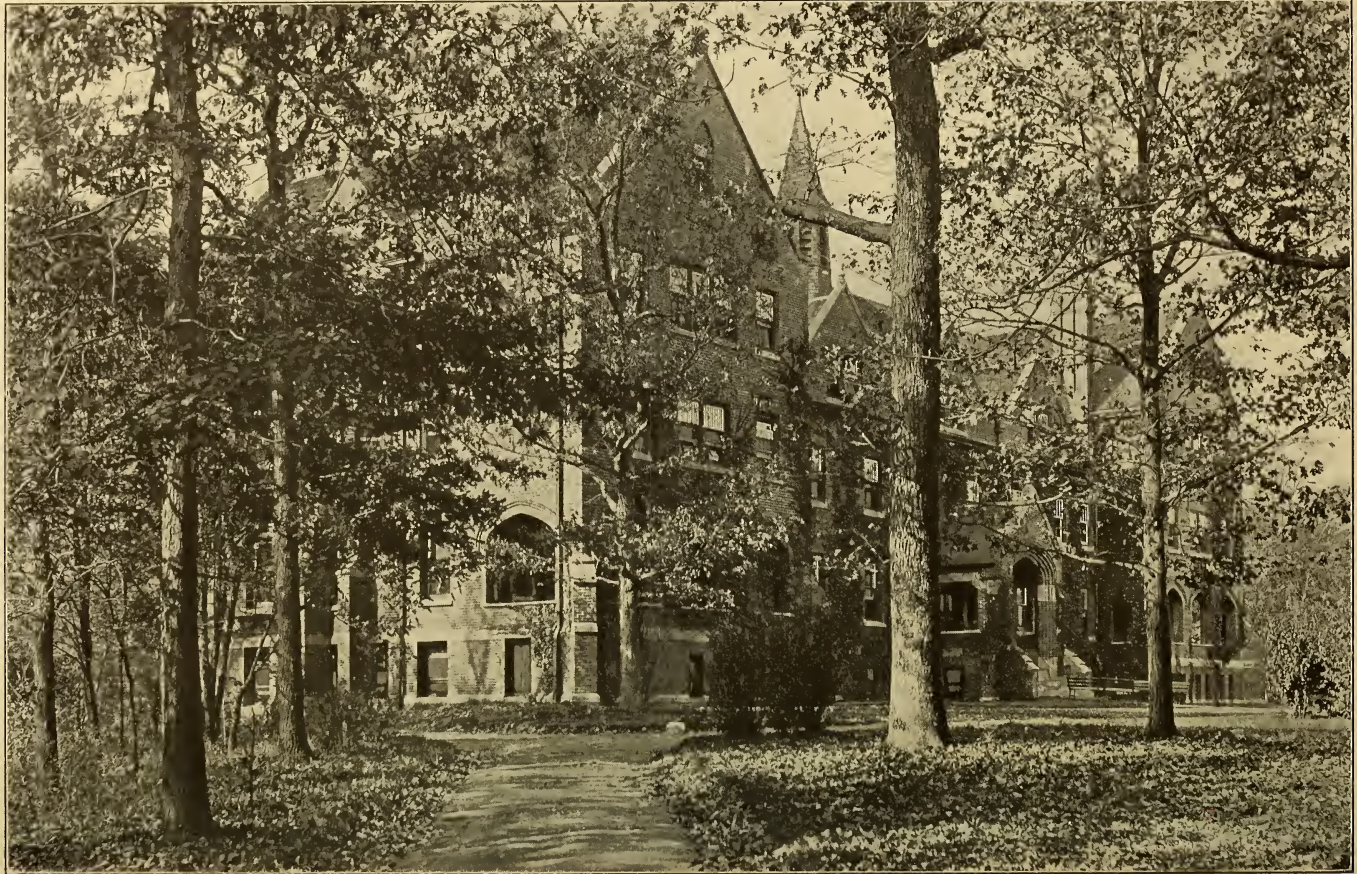
Deficit..... \$5,363.18

Students.—College..... 538
 Preparatory.....
 Others (Special)..... 22
 Total..... 560
 Graduates 1911-12..... 71

Bible Study.—Required of all students.

Alumni.—Classes 1836 to 1912:

Ministers..... 627
 Foreign Missionaries..... 51
 Teaching..... 521
 Law..... 780
 Medicine..... 453
 Other Professions..... 868
 Business..... 1,259
 All Others..... 1,155
 Total, Less 51, counted twice..... 5,663



Lois Durand Hall

LAKE FOREST COLLEGE

LAKE FOREST COLLEGE, Lake Forest, Illinois

(Legal Name, Lake Forest University)

Co-educational. Chartered 1857. Opened 1876

Government.—By Nineteen Trustees, who elect their successors, but their election must be confirmed by the Synod of Illinois.

Period covered by this Report.—Is for College only, Oct. 1, 1911—Sept. 30, 1912.

Faculty.—Number of Members 19

Property. —Land (Acres, 58)	\$167,380.00	
Buildings (No. of, 16)	442,500.00	
Furniture and Equipment	30,500.00	
Library: No. of Books, 25,000; Value	25,000.00	
Total Property		\$665,380.00

Endowment. —		
Income Producing		747,710.98
Other Funds

Total Assets		\$1,413,090.98
Less Net Indebtedness

Net Assets

Gifts Received During Year. —		
Equipment, \$2,350; Endowment, \$2,500		\$4,850.00

Expenses of Maintenance. —		
Faculty Salaries, \$35,250; Other Salaries, \$4,200	\$39,450.00	
All other Expenses	26,966.51	
Total Expenses		\$66,416.51

Income for Maintenance. —		
From Endowment	\$33,247.94	
Student Fees	10,550.65	
Room Rent, \$11,226.85; Boarding Department, \$150	11,376.85	
Individuals, \$9,844.65; Other Sources, \$788.89	10,633.54	
Churches: Direct or through College Board	75.00	
College Board	532.53	
Total Income		\$66,416.51

Deficit or Surplus

Students. —College	204	
Preparatory	
Others (Graduate)	4	
Total (Men, 115; Women, 93)		208
Graduates 1911-12 (Men, 16; Women, 9)		25

Bible Study.—Required of all students.

Alumni and Alumnæ. —Since the year 1879-1912:		
Ministers	72	
Students now in Theological Seminaries	4	
Foreign Missionaries	13	
Women in Mission Work	
Other Christian Workers	6	
Teaching	125	
Law	47	
Medicine	24	
Other Professions	49	
Business, 99; all Others, 117	216	
Total, Less 14, counted twice		542



Recitation Hall



Clark and Doolittle Halls

LENOX COLLEGE

LENOX COLLEGE, Hopkinton, Iowa

Co-educational. Organized 1856

Government.—By Thirty-six Trustees, who nominate their successors, but the Synod of Iowa elects them; a majority must be members of the Presbyterian Church.

Period covered by this Report.—June 1, 1911—August 31, 1912.

Faculty.—Number of Members. 12

Property.—Land (Acres, 20 Campus; 25 other land) . . . \$13,200.00
 Buildings (No. of, 4) 2 are valued in Endowment . . . 39,784.18
 Furniture and Equipment 8,702.43
 Library: No. of Books, 10,000; Value 15,000.00
 Total Property \$ 76,686.61

Endowment.—
 Income Producing \$156,022.50
 Non-income Producing 19,500.00
 Total Endowment 175,522.50

Other Funds

Total Assets \$252,209.11
Less Net Indebtedness

Net Assets

Gifts Received During Year.—
 For Deficit, \$42,317.55; Building, \$12,000 \$54,317.55
 Equipment, \$3,332; Endowment, \$55,000 58,332.00
 Total (Received in Cash, \$11,923.45) \$112,649.55
 Amount received subject to Annuities not in above \$750.00

Expenses of Maintenance.—
 Faculty Salaries, \$9,655; Other Salaries, \$725 \$10,380.00
 All other Expenses 5,223.25
 Total Expenses \$15,603.25

Income for Maintenance.—
 From Endowment \$4,358.73
 Student Fees 5,277.20
 Room Rent, \$207.19; Boarding Department, ———— 207.19
 Individuals, ————; Other Sources, ————
 Churches: Direct or through College Board 10.00
 College Board 1,050.00
 Total Income 10,903.18

Deficit (Provided for by subscriptions) \$4,700.07

Students.—College 35
 Preparatory 35
 Others (Special) 61
 Total (Men, 70; Women, 61) 131
 Graduates 1911-12 (Men, 3; Women, 5) 8

Bible Study.—Required of all regular students.

Alumni and Alumnae.—Since the year 1856:
 Ministers 42
 Students now in Theological Seminaries 2
 Foreign Missionaries 11
 Women in Mission Work 6
 Other Christian Workers 8
 Teaching 210
 Law 29
 Medicine 22
 Other Professions 43
 Business, 26; all Others, 5 31
 Total, Less 64, counted twice 340



LINCOLN UNIVERSITY

LINCOLN UNIVERSITY, Lincoln University, Pennsylvania

For Colored Men. Chartered 1854. Opened 1857

Government.—By Twenty-one Trustees, who elect their successors.

Period covered by this Report.—Is for College Department only—October, 1910—October, 1911.

Faculty.—Number of Members. 13

Property.—Land (Acres, 70) \$ 23,500.00
 Buildings (No. of, 14) 165,050.00
 Furniture and Equipment 5,136.00
 Library: No. of Books, 18,000; Value 9,000.00
 Total Property \$202,686.00

Endowment.—Income Producing 260,653.00
Other Funds

Total Assets \$463,339.00
Less Net Indebtedness

Net Assets

Gifts Received During Year.—
 Equipment, \$22,296.41; Endowment, \$6,000. \$28,296.41

Expenses of Maintenance.—
 Faculty Salaries, \$10,207.33; Other Salaries, \$3,255.72 \$13,463.05
 All other Expenses, includes cost of free tuition. 19,338.26
 Total Expenses \$32,801.31

Income for Maintenance.—
 From Endowment \$13,146.89
 Student Fees, Room Rent, etc. 5,230.45
 Individuals, \$9,480.57; Other Sources, \$4,455.90 13,936.47
 Churches: Direct or through College Board
 College Board 487.50
 Total Income \$32,801.31

Deficit or Surplus

Students.—College 134
 Preparatory
 Others (Special)
 Total 134
 Graduates 1911-12 31

Bible Study.—Required of all students.

Alumni.—Since the year 1901-11:
 Ministers 96
 Students now in Theological Seminaries 27
 Foreign Missionaries 5
 Women in Mission Work
 Other Christian Workers 1
 Teaching 48
 Law 26
 Medicine 49
 Other Professions
 Business, 44; all Others, — 44
 Total, Less 5, counted twice 291



Jubilee Hall



Sibley Hall

LINDENWOOD COLLEGE

LINDENWOOD COLLEGE FOR WOMEN

(Legal Name, Lindenwood Female College)

St. Charles, Missouri

Organized 1831. Chartered 1853

Government.—By Fifteen Trustees, elected by the Synod of Missouri.

Period covered by this Report.—First Term 1912-13.

Faculty.—Number of Members. 15

Property.—Land (Acres, 30).....	\$ 32,620.00	
Buildings (No. of, 4).....	106,000.00	
Furniture and Equipment.....	27,001.00	
Library: No. of Books, 2,100; Value.....	2,500.00	
Total Property.....		\$168,121.00

Endowment..... 21,000.00

Other Funds.....

Total Assets..... \$189,121.00

Less Net Indebtedness.....

Net Assets.....

Gifts Received During Year.....

Expenses of Maintenance (For six months).—

Faculty Salaries, \$5,387.50; Other Salaries, ———	\$ 5,387.50	
All other Expenses.....	14,612.50	
Total Expenses.....		\$20,000.00

Income for Maintenance (For six months).—

From Endowment.....	\$ 360.00	
Student Fees.....	19,640.00	
Room Rent, ———; Boarding Department, ———		
Individuals, ———; Other Sources, ———		
Churches: Direct or through College Board.....		
College Board.....		
Total Income.....		\$20,000.00

Deficit or Surplus.....

Students.—College.....	29	
Preparatory.....	85	
Others (Special).....	..	
Total.....		114
Graduates 1911-12.....		..

Bible Study.—Required of all students.

Alumnæ.—

Ministers.....	..	
Students now in Theological Seminaries.....	..	
Foreign Missionaries.....	..	
Women in Mission Work.....	..	
Other Christian Workers.....	..	
Teaching.....	..	
Law.....	..	
Medicine.....	..	
Other Professions.....	..	
Business, —; all Others, —.....	..	
Total.....		..



MACALESTER COLLEGE

MACALESTER COLLEGE, Saint Paul, Minnesota

Co-educational. Organized 1885

Government.—By Fifteen Trustees, who elect their successors, but two-thirds must be members of the Presbyterian Church.

Period covered by this Report.—May 31, 1911—May 31, 1912.

Faculty.—Number of Members. 28

Property.—Land (Acres, 41) \$100,800.00
 Buildings (No. of, 10) 237,500.00
 Furniture and Equipment 27,542.21
 Library: No. of Books, 12,600; Value 7,000.00
 Total Property \$372,842.21

Endowment.—
 Income Producing 306,828.52
Other Funds. 10,160.34

Total Assets. \$689,831.07
Less Net Indebtedness.

Net Assets.

Gifts Received During Year.—
 Equipment, \$2,025.98; Endowment, \$15,206.38 \$17,232.36

Expenses of Maintenance.—
 Faculty Salaries, \$18,879.89; Other Salaries, \$4,934.69 \$28,314.69
 All other Expenses 35,362.12
 Total Expenses \$63,676.81

Income for Maintenance.—
 From Endowment \$16,100.95
 Student Fees 9,073.65
 Room Rent, \$1,413.50; Boarding Department, \$12,390.86 13,804.36
 Individuals, \$7,765.87; Other Sources, \$12,949.97 20,715.84
 Churches: Direct or through College Board 957.31
 College Board 3,024.70
 Total Income \$63,676.81

Deficit or Surplus.

Students.—College 172
 Preparatory 102
 Others (Special) 35
 Total (Men, 156; Women, 153) 309
 Graduates 1911-12 (Men, 11; Women, 18) 29

Bible Study.—Required of all students.

Alumni and Alumnæ.—Since the year 1885:
 Ministers 74
 Students now in Theological Seminaries 15
 Foreign Missionaries 13
 Women in Mission Work 3
 Other Christian Workers
 Teaching 67
 Law 10
 Medicine 9
 Other Professions 7
 Business, 21; all Others, 65 86
 Total 284



MARYVILLE COLLEGE

ERRATA

Students. —College (regular full term).....	154
Alumni and Alumnae.* —	
Ministers, 1819-1912.....	285

MARYVILLE COLLEGE, Maryville, Tennessee

Co-educational. Organized 1819

Government.—By Thirty-six Trustees, elected by the Synod of Tennessee.

Period covered by this Report.—May 15, 1911—May 15, 1912.

Faculty.—Number of Members..... 39

Property.—Land (Acres, 232)..... \$ 25,000.00
 Buildings (No. of 13)..... 253,875.00
 Furniture and Equipment, \$19,650; Improvements,
 \$11,115..... 30,765.00
 Library: No. of Books, 20,500; Value..... 13,250.00
 Total Property..... \$322,890.00

Endowment.—
 Income Producing..... \$444,692.17
 Non-income Producing..... 19,500.00
 Total Endowment..... 464,192.17

Other Funds.....

Total Assets..... \$787,082.17

Less Net Indebtedness.....

Net Assets.....

Gifts Received During Year.—

For Land, ———; Building, \$14,130..... \$14,130.00
 Student Help, \$10,653.99; Endowment, \$4,952.82..... 15,606.81
 Total..... \$29,736.81

Expenses of Maintenance.—

Faculty Salaries, \$23,908.55; Other Salaries, \$1,500..... \$25,408.55
 All other Expenses, including Annuity and Repairs..... 23,540.94
 Total Expenses..... \$48,949.49

Income for Maintenance.—

From Endowment..... \$22,451.13
 Student Fees..... 20,158.75
 Room Rent, ———; Boarding Department, ———.....
 Individuals, ———; Other Sources, \$2,472..... 2,472.00
 Churches: Direct or through College Board..... 4,125.00
 College Board.....
 Total Income..... 49,206.88

Surplus..... \$257.39

Students.—College (70 are short term)..... 154
 Preparatory..... 472
 Others (Special)..... 23
 Total, (Men, 379; Women, 270)..... 649
 Graduates 1911-12 (Men, 16; Women, 11)..... 27

Bible Study.—Required of all students.

Alumni and Alumnae.*—

Ministers, 1819-1912..... 205
 Foreign Missionaries since 1866..... 28
 Foreign Missionaries, including Undergraduates
 since 1866..... 45
 Women in Mission Work since 1866..... 31
 Other Christian Workers since 1866..... 7
 Teaching since 1866..... 206
 Law since 1866..... 26
 Medicine since 1866..... 17
 Other Professions since 1866..... 4
 Business since 1866..... 40
 All others since 1866..... 26
 Net total since 1866, 460; total since 1819..... 710

* Records previous to 1866 lost during the Civil War.



The Main Building and Shady Campus

MISSOURI VALLEY COLLEGE

MISSOURI VALLEY COLLEGE, Marshall, Missouri

Co-educational. Organized 1889

Government.—By Thirteen Trustees, elected by the Synods of Kansas and Missouri.

Period covered by this Report.—May 31, 1911—May 31, 1912.

Faculty.—Number of Members..... 14

Property.—Land (Acres, 40)..... \$ 52,410.00
 Buildings (No. of, 4)..... 117,940.00
 Furniture and Equipment..... 26,359.01
 Library* No. of Books, 141,541; Value..... 32,720.75
 Total Property..... 229,429.76

Endowment.—
 Income Producing..... \$184,525.09
 Non-income Producing..... 5,166.00
 Total Endowment..... 189,691.09

Other Funds..... 2,181.98

Total Assets..... \$421,302.83
Less Net Indebtedness..... 3,350.00

Net Assets..... \$417,952.83

Gifts Received During Year.....

Expenses of Maintenance.—
 Faculty Salaries, \$14,716.56; Other Salaries, \$1,540 \$ 16,256.56
 All other Expenses..... 12,429.39
 Total Expenses..... \$28,685.95

Income for Maintenance.—
 Cash balance from last year..... \$ 1,642.10
 From Endowment..... 10,145.44
 Student Fees..... 8,855.93
 Room Rent, \$700; Boarding Department, _____ 700.00
 Individuals, _____; Other Sources, \$3,501.48..... 3,501.48
 Churches: Direct or through College Board.....
 College Board..... 3,841.00
 Total Income..... \$28,685.95

Deficit or Surplus.....

Students.—College..... 94
 Preparatory..... 70
 Others (Special)..... 58
 Total (Men, 109; Women, 113)..... 222
 Graduates 1911-12 (Men, 10; Women, 6)..... 16

Bible Study.—Required of all students.

Alumni and Alumnæ.—Since the year 1889:
 Ministers..... 79
 Students now in Theological Seminaries..... 12
 Foreign Missionaries..... 11
 Women in Mission Work..... 6
 Other Christian Workers..... 2
 Teaching..... 104
 Law..... 9
 Medicine..... 11
 Other Professions.....
 Business, —; all Others, —..... 36
 Total, Less 4, counted twice..... 266



THE COLLEGE OF MONTANA

THE COLLEGE OF MONTANA, Deer Lodge, Montana

Co-educational. Organized 1885. Closed 1900-4. Reopened 1905

Government.—By Fifteen Trustees, who elect their successors, two-thirds of whom must be members of the Presbyterian Church; their election must be confirmed by the Synod of Montana.

Period covered by this Report.*—Year 1911-12.

Faculty.—Number of Members..... 13

Property. —Land (Acres, 15).....	\$ 11,000.00	
Buildings (No. of, 4).....	100,000.00	
Furniture and Equipment.....	5,000.00	
Library: No. of Books, _____; Value.....	100.00	
Total Property.....		\$116,100.00

Endowment. —		
Income Producing.....		99,072.00
(Pledges toward additional Endowment, \$50,000)		

Other Funds.....

Total Assets		\$215,172.00
---------------------------	--	--------------

Less Net Indebtedness		13,619.19
------------------------------------	--	-----------

Net Assets		\$201,552.81
-------------------------	--	--------------

Gifts Received During Year. —For Buildings, \$4,375; (In cash, \$1,675)		\$4,375.00
--	--	------------

Expenses of Maintenance. —		
Faculty Salaries, \$11,459; Other Salaries, \$2,020..	\$13,479.00	
All other Expenses.....	6,904.79	
Total Expenses.....		\$20,383.79

Income for Maintenance. —		
From Endowment.....	\$7,343.46	
Student Fees.....	3,103.78	
Room Rent, \$1,943.48; Boarding Department, \$900	2,843.48	
Individuals, \$1,435.50; Other Sources, _____	1,435.50	
Churches: Direct or through College Board.....	193.62	
College Board.....	2,050.00	
Total Income.....		16,969.84

Deficit		\$3,413.95
----------------------	--	------------

Students. —College.....	15	
Preparatory.....	40	
Others (Special).....	50	
Total (Men, 32; Women, 73).....		105
Graduates 1911-12 (Men, 1; Women, 1).....		2

Bible Study.—Required of all regular students.

Alumni and Alumnae. —		
Ministers.....		
Students now in Theological Seminaries.....		
Foreign Missionaries.....		
Women in Mission Work.....		
Other Christian Workers.....		
Teaching.....		
Law.....		
Medicine.....		
Other Professions.....	13	
Business, —; all Others, —.....		
Total.....		13

* Report subject to modifications.



Scenes AT Commencement

NEW YORK UNIVERSITY

NEW YORK UNIVERSITY, New York, N. Y.

Co-educational in part. Organized 1831

Government.—By a Council of Thirty-two members who elect their successors.

Period covered by this Report.—July 1, 1911—June 30, 1912.

Faculty.—Number of Members (Professors, Assistant Professors, Lecturers, Instructors, Assistant Instructors) 385

Property.—Land (Acres, 40)..... \$1,262,886.35
 Buildings (No. of, 21)..... 2,175,221.40
 Furniture and Equipment, etc..... 121,090.30
 Library: No. of Books, 70,278; Value..... 153,102.73
 Total Property..... 3,712,300.78

Endowment.—
 Income Producing..... 1,277,454.95
Other Funds..... 89,003.54

Total Assets..... \$5,078,759.27
Less Net Indebtedness..... 54,806.71

Net Assets..... \$5,023,952.56

Gifts Received During Year.—
 For Buildings, \$10,000; Endowment, \$25,000..... \$35,000.00

Expenses of Maintenance.—
 Faculty Salaries, \$281,411.06; Other Salaries, \$83,841..... \$365,252.06
 All other Expenses..... 126,240.90
 Total Expenses..... \$491,492.96

Income for Maintenance.—
 From Endowment..... \$ 53,755.19
 Student Fees..... 353,718.34
 Room Rent..... 16,235.91
 Individuals, \$23,758.21; Other Sources, \$2,707.25.. 26,465.46
 Churches: Direct or through College Board.....
 College Board.....
 Total Income..... 450,174.90

Deficit..... \$41,318.06

Students.—College..... 786
 Preparatory.....
 Others, Professional and Graduate..... 3,579
 Total (Men, 3,645; Women, 720)..... 4,365
 Graduates 1911-12 (Men, 532; Women, 52)..... 584

Bible Study.—Elective only.

Alumni and Alumnae.—Since the year 1831:
 Ministers.....
 Students now in Theological Seminaries.....
 Foreign Missionaries.....
 Women in Mission Work.....
 Other Christian Workers.....
 Teaching.....
 Law.....
 Medicine.....
 Other Professions.....
 Business, —; all Others, —.....
 Total..... 22,103



JOHNSON HALL OF LETTERS
OCCIDENTAL COLLEGE.
Byron Hunt - Architect - Los Angeles.



FOWLER HALL OF SCIENCE
OCCIDENTAL COLLEGE.
Byron Hunt - Architect - Los Angeles.

OCCIDENTAL COLLEGE

OCCIDENTAL COLLEGE, Los Angeles, California

Co-educational. Organized 1887

Government.—By Twenty Trustees, who elect their successors; all must be professing Christians.

Period covered by this Report.—Year 1911-12.

Faculty.—Number of Members 24

Property.—Land (Acres, 195) \$231,900.00
 Buildings (No. of, 4) 145,000.00
 Furniture and Equipment 20,000.00
 Library: No. of Books, 8,000; Value 8,000.00
 Total Property \$404,900.00

Endowment.—
 Income Producing \$296,722.65
 Non-income Producing 14,585.75
 (Pledges toward additional Endowment, \$40,412.65)
 Total Endowment 311,308.40

Other Funds.—New Building Fund 250,000.00

Total Assets. \$966,208.40

Less Net Indebtedness. 83,500.00

Net Assets. \$882,708.40

Gifts Received During Year.—
 For Land, ———; Building, \$250,000 \$250,000.00
 Equipment, \$5,500; Endowment, \$30,000 35,500.00
 Total (Received in Cash, \$285,500) \$285,500.00

Expenses of Maintenance.
 Faculty Salaries, \$27,970; Other Salaries, \$8,100 \$36,070.00
 All other Expenses 14,335.00
 Total Expenses \$50,405.00

Income for Maintenance.—From Endowment \$13,500.00
 Student Fees 24,000.00
 Room Rent, \$115; Boarding Department, ——— 115.00
 Individuals, \$2,243; Other Sources, \$85 2,328.00
 Churches: Direct or through College Board 2,532.00
 College Board
 Total Income 42,475.00

Deficit \$7,703.00

Students.—College 220
 Preparatory 73
 Others (Special) 6
 Total (Men, 151; Women, 148) 299
 Graduates 1911-12 (Men, 14; Women, 16) 30

Bible Study.—Required of all students.

Alumni and Alumnæ.—Since the year 1887:
 Ministers 16
 Students now in Theological Seminaries 7
 Foreign Missionaries 14
 Women in Mission Work
 Other Christian Workers 5
 Teaching 79
 Law 7
 Medicine 6
 Other Professions
 Business, 38; all Others, 63 101
 Total, Less 6, counted twice 229



OSWEGO COLLEGE

OSWEGO COLLEGE, Oswego, Kansas

(Legal Name, Oswego College for Young Ladies)

For Women. Chartered 1883. Opened 1886

Government.—By Nine Trustees, elected by the Synod of Kansas. Charter provides for control by the General Assembly of the Presbyterian Church and the Presbytery of Neosho, Kansas.

Period covered by this Report.—June 1, 1911—June 1, 1912.

Faculty.—Number of Members. 14

Property.—Land (Acres, 10)	\$ 2,000.00	
Buildings (No. of 4)	31,000.00	
Furniture and Equipment	5,000.00	
Library: No. of Books, 1,200; Value	1,000.00	
Total Property		\$39,000.00

Endowment.

Other Funds.

Total Assets		\$39,000.00
Less Net Indebtedness (Indebtedness provided for by subscriptions)		7,091.15

Net Assets \$31,908.85

Gifts Received During Year

Expenses of Maintenance. —		
Faculty Salaries, \$4,452.50; Other Salaries, ———	\$4,452.50	
All Other Expenses	7,391.68	
Total Expenses		\$11,844.18

Income for Maintenance. —		
From Endowment		
Student Fees	\$6,914.09	
Room Rent, ———; Boarding Department, ———		
Individuals, \$4,298.50; Other Sources, \$116.46	4,414.96	
Churches: Direct or through College Board	171.02	
College Board		
Total Income		11,500.07

Deficit (Made up by local subscriptions) \$344.11

Students. —College	10	
Preparatory	56	
Others (Special)	37	
Total		103
Graduates 1911-12		3

Bible Study.—Required of all students.

Alumnæ. —Since 1886:		
Ministers		
Students now in Theological Seminaries		
Foreign Missionaries		
Women in Mission Work	4	
Other Christian Workers		
Teaching	16	
Law		
Medicine		
Other Professions	6	
Business, —; all Others	22	
Total		48



Lecture Hall



Men's Dormitory

PARK COLLEGE

PARK COLLEGE, Parkville, Missouri

Co-educational. Organized 1875

Government.—By Twenty-one Trustees, who elect their successors.

Period covered by this Report.—June 1, 1911—May 31, 1912.

Faculty.—Number of Members. 24

Property.—Land (Acres, 100 Campus; 1,005 acres other lands) \$143,625.00
 Buildings (No. of, 38) 288,800.00
 Furniture and Equipment, Public Service Equipment 105,984.00
 Library: No. of Books, 24,560; Value in Buildings
 Total Property \$538,409.00

Endowment.—
 Income Producing 435,908.57
Other Funds.—Non-Productive Assets 45,600.00

Total Assets. \$1,019,917.57
Less Net Indebtedness.

Net Assets.

Gifts Received During Year.—For Improvements, etc., \$31,414.30;
 Building, \$8,000; Endowment, \$25,301.02. \$64,715.32

Expenses of Maintenance.—
 Faculty Salaries, \$25,950; Other Salaries, \$13,520. \$39,470.00
 All other Expenses 65,515.70
 Total Expenses \$104,985.70

Income for Maintenance.—
 From Endowment \$19,974.68
 Student Fees 12,472.28
 Room Rent, —; Boarding Department, —
 Individuals, \$39,414.30; Other Sources, \$6,220.92 45,635.22
 Churches: Direct or through College Board
 College Board
 Total Income 78,081.58

Deficit paid from undesignated funds. \$26,904.12

Students.—College 229
 Preparatory 136
 Others (Special) 25
 Total (Men, 209; Women, 181) 390
 Graduates 1911-12 (Men, 21; Women, 16) 37

Bible Study.—Required of all students.

Alumni and Alumnae.—Since the year 1875:
 Ministers 181
 Students now in Theological Seminaries 11
 Foreign Missionaries 91
 Women in Mission Work 53
 Other Christian Workers 26
 Teaching 160
 Law 28
 Medicine 36
 Other Professions
 Business, 60; all Others, 149 209
 Total 795



Foster Science Hall



Library Hall

PARSONS COLLEGE

PARSONS COLLEGE, Fairfield, Iowa

Co-educational. Organized 1875

Government.—By Thirty Trustees, who elect their successors. Their election must be approved by the Synod of Iowa.

Period covered by this Report.—June 1, 1911—June 1, 1912.

Faculty.—Number of Members. 18

Property. —Land (Acres, 35)	\$ 29,606.20	
Buildings (No. of, 12; 4 valued in Endowment)	150,124.98	
Furniture and Equipment	39,323.60	
Library: No. of Books, 7,192; Value	5,567.00	
Total Property	\$224,621.78	

Endowment. —		
Income Producing	\$234,189.03	
Other Funds and Assets.	7,804.64	

Total Assets	\$466,615.45	
Less Net Indebtedness (Pledges for same in hand)	63,330.54	

Net Assets. \$403,284.91

Gifts Received During Year.—

Expenses of Maintenance. —		
Faculty Salaries, \$18,551; Other Salaries, \$2,220	\$20,771.00	
All other Expenses	12,096.85	
Total Expenses	\$32,867.85	

Income for Maintenance. —		
From Endowment	\$ 8,807.56	
Student Fees	10,686.67	
Room Rent, \$1,023.25; Boarding Department, \$625.60	1,648.85	
Individuals, \$4,946.83; Other Sources, ———	4,946.83	
Churches: Direct or through College Board	135.60	
College Board	25.00	
Total Income	26,250.51	

Deficit.—To be paid by subscriptions made \$6,617.34

Students. —College	94	
Preparatory	60	
Others (Special)	138	
Total (Men, 121; Women, 171)		292
Graduates 1911-12 (Men, 6; Women, 5)		11

Bible Study.—Required of all regular students.

Alumni and Alumnæ. —Since the year 1875:		
Ministers	79	
Students now in Theological Seminaries	1	
Foreign Missionaries	24	
Women in Mission Work	9	
Other Christian Workers	1	
Teaching	106	
Law	36	
Medicine	28	
Other Professions	20	
Business, 50; all Others, 67	117	
Total, Less 2, counted twice		419



PIKEVILLE COLLEGE

PIKEVILLE COLLEGE, Pikeville, Kentucky

Co-educational. Organized as Academy 1889. Organized as College 1909

Government.—By Eleven Trustees, elected by the Synod of Kentucky upon nomination by the Presbytery of Ebenezer.

Period covered by this Report.—June 1, 1911—June 1, 1912.

Faculty.—Number of Members. 10

Property. —Land (Acres, 7)	\$15,000.00	
Buildings (No. of 3)	55,000.00	
Furniture and Equipment	4,950.00	
Library: No. of Books, 1,600; Value	1,100.00	
Total Property		\$76,050.00

Endowment. —		
Income Producing		400.00
Other Funds		

Total Assets		\$76,450.00
Less Net Indebtedness		1,500.00

Net Assets \$74,950.00

Gifts Received During Year

Expenses of Maintenance. —		
Faculty Salaries, \$5,570; Other Salaries, \$665	\$6,235.00	
All other Expenses	1,300.96	
Total Expenses		\$7,535.96

Income for Maintenance. —		
From Endowment		
Student Fees	3,026.09	
Room Rent, \$76; Boarding Department, —	76.00	
Individuals, \$910.12; Other Sources \$1,290	2,200.12	
Churches: Direct or through College Board	455.31	
College Board	600.00	
Total Income		6,357.52

Deficit \$1,178.44

Students. —College		
Preparatory	4	
Others (Special)	222	
Others (Special)	20	
Total (Men, —; Women, —)		246
Graduates 1911-12 (Men, 3; Women, 1)		4

Bible Study.—Required of all students.

Alumni and Alumnae. —		
Ministers		
Students now in Theological Seminaries		
Foreign Missionaries		
Women in Mission Work		
Other Christian Workers		
Teaching		
Law		
Medicine		
Other Professions		
Business, —; all Others, —		
Total		43



Recitation Hall



Dormitory

REYNOLDS COLLEGE

REYNOLDS COLLEGE, Albany, Texas

Co-educational. Organized 1909

Government.—By Seven Trustees, elected by the Presbytery of Abilene.

Period covered by this Report.—June 15, 1911—June 15, 1912.

Faculty.—Number of Members. 7

Property. —Land (Acres, —)	\$ 2,000.00	
Buildings (No. of, 2)	25,000.00	
Furniture and Equipment	1,800.00	
Library: No. of Books, 600; Value	1,000.00	
Total Property	\$29,800.00	

Endowment
Other Funds

Total Assets \$29,800.00
Less Net Indebtedness

Net Assets

Gifts Received During Year

Expenses of Maintenance. —		
Faculty Salaries,* \$1,490.20; Other Salaries, ———	\$1,490.20	
All other Expenses	591.20	
Total Expenses	\$2,081.40	

Income for Maintenance. —		
From Endowment		
Student Fees	\$1,452.75	
Room Rent, ———; Boarding Department, ———	
Individuals, \$111.50; Other Sources, ———	111.50	
Churches: Direct or through College Board	26.90	
College Board	500.00	
Total Income	2,091.15	

Surplus \$9.75

Students. —College	15	
Preparatory	25	
Others (Special)	19	
Total (Men, 33; Women, 26)	59	
Academy Graduates 1911-12 (Men, 10; Women, 1)	11	

Bible Study.—Required of all students.

Alumni and Alumnae. —Since the year 1909:		
Ministers		
Students now in Theological Seminaries		
Foreign Missionaries		
Women in Mission Work		
Other Christian Workers		
Teaching	4	
Law		
Medicine		
Other Professions	3	
Business, 9; all Others, 9	18	
Total	25	

* The literary teachers have other means of support than salary.



TEXAS FAIREMONT SEMINARY

TEXAS FAIREMONT SEMINARY, Weatherford, Texas

For Women. Organized 1890

Government.—By Nine Trustees, elected by the Synod of Texas.

Period covered by this Report.—May 30, 1911—May 30, 1912.

Faculty.—Number of Members..... 10

Property.—Land (Acres, 8)..... \$ 2,500.00
 Buildings (No. of, 3)..... 46,000.00
 Furniture and Equipment..... 3,500.00
 Library: No. of Books, 980; Value..... 500.00
 Total Property..... \$52,500.00

Endowment.....
Other Funds.....

Total Assets..... \$52,500.00
Less Net Indebtedness..... 7,775.00

Net Assets..... \$44,725.00

Gifts Received During Year.—For Building..... \$5,200.00

Expenses of Maintenance.—
 Faculty Salaries, \$4,130; Other Salaries, ——... \$4,130.00
 All other Expenses..... 5,635.00
 Total Expenses..... \$9,765.00

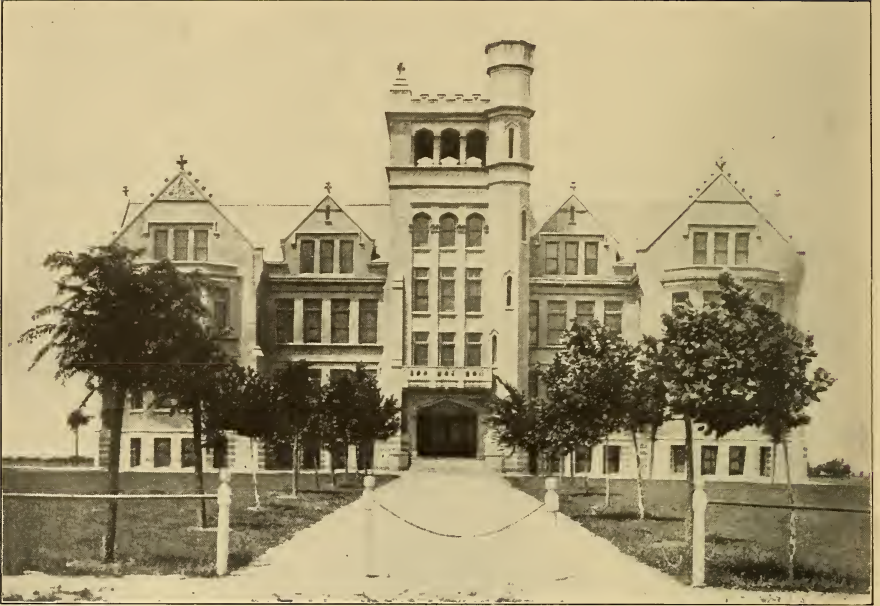
Income for Maintenance.—
 From Endowment.....
 Student Fees..... \$7,570.00
 Room Rent, ——; Boarding Department, ——
 Individuals, ——; Other Sources, ——
 Churches: Direct or through College Board.....
 College Board..... 750.00
 Total Income..... 8,320.00

Deficit..... \$1,445.00

Students.—College..... 27
 Preparatory..... 26
 Others (Special)..... 110
 Total..... 163
 Graduates 1911-12..... 9

Bible Study.—Required of all students.

Alumnæ.—Since the year 1890:
 Ministers.....
 Students now in Theological Seminaries.....
 Foreign Missionaries.....
 Women in Mission Work.....
 Other Christian Workers.....
 Teaching.....
 Law.....
 Medicine.....
 Other Professions.....
 Business, —; all Others, ——
 Total..... 142



Administration Building



Frank Drane Women's Building

TRINITY UNIVERSITY

TRINITY UNIVERSITY, Waxahachie, Texas

Co-educational. Organized 1869

Government.—By Nine Trustees, elected by the Synod of Texas.

Period covered by this Report.—College year, 1911-12.

Faculty.—Number of Members. 22

Property.—Land (Acres, 33) \$ 25,000.00
 Buildings (No. of, 5) 172,000.00
 Furniture and Equipment 15,000.00
 Library: No. of Books, 5,500; Value 5,000.00
 Total Property \$217,000.00

Endowment.—
 Income Producing \$81,318.17
 Non-income Producing 9,387.12
 Total Endowment 90,705.29
Other Funds 3,600.00

Total Assets. \$311,305.29
Less Net Indebtedness (\$16,512 of notes received to apply on debt) 28,000.00

Net Assets. \$283,305.29

Gifts Received During Year.—
 For Land, \$175; Building, \$52,078 \$52,253.00

Expenses of Maintenance.—
 Faculty Salaries, \$21,790; Other Salaries, \$2,143 . . . \$23,933.00
 All other Expenses 12,413.00
 Total Expenses \$36,346.00

Income for Maintenance.—
 From Endowment \$ 1,800.00
 Student Fees 24,646.00
 Room Rent, ———; Boarding Department, ———
 Individuals, \$465; Other Sources, \$6,105 6,570.00
 Churches: Direct or through College Board 330.00
 College Board 3,000.00
 Total Income \$36,346.00

Deficit or Surplus.

Students.—College 171
 Preparatory 108
 Others (Special) 67
 Total (Men, 169; Women, 177) 346
 Graduates 1911-12 (Men, 9; Women, 8) 17

Bible Study.—Required of all regular students.

Alumni and Alumnae.—Since the year 1871:
 Ministers 97
 Students now in Theological Seminaries 7
 Foreign Missionaries 6
 Women in Mission Work 3
 Other Christian Workers
 Teaching 99
 Law 43
 Medicine 9
 Other Professions 2
 Business, 48; all Others, 53 101
 Total, Less 13, counted twice 354



McCormick Hall



Men's Dormitory

TUSCULUM COLLEGE

TUSCULUM COLLEGE, Greeneville, Tennessee

Co-educational. Organized 1794

Government.—By Twenty-one Trustees, who elect their successors.

Period covered by this Report.—June 1, 1911—June 1, 1912.

Faculty.—Number of Members. 14

Property.—Land (Acres, 48) \$ 8,000.00
 Buildings (No. of, 10; 2 are valued in Endowment) 83,000.00
 Furniture and Equipment 8,100.00
 Library: No. of Books, 8,500; Value 8,000.00
 Total Property \$107,100.00

Endowment.—
 Income Producing 35,300.00
 (Pledges toward additional Endowment, \$58,000)

Other Funds.

Total Assets. \$142,400.00

Less Net Indebtedness.

Net Assets.

Gifts Received During Year.—Equipment, \$3,000 \$3,000.00

Expenses of Maintenance.—

Faculty Salaries, \$12,518.33; Other Salaries, \$2,138 \$14,656.33
 All other Expenses 6,713.21
 Total Expenses \$21,369.54

Income for Maintenance.—

From Endowment \$ 2,201.91
 Student Fees 3,724.65
 Room Rent, \$1,674.96; Boarding Department,
 \$163.10 1,838.06
 Individuals, \$10,252.50; Other Sources, \$1,147.75 11,400.25
 Churches: Direct or through College Board 197.87
 College Board 1,500.00
 Total Income 20,862.74

Deficit. \$506.80

Students.—College 27
 Preparatory 115
 Others (Special) 40
 Total (Men, 89; Women, 93) 182
 Graduates 1911-12 (Men, 4; Women, 4) 8

Bible Study.—Required of all students.

Alumni and Alumnae.—Since the year 1794:

Ministers 149
 Students now in Theological Seminaries 15
 Foreign Missionaries 4
 Women in Mission Work 4
 Other Christian Workers 38
 Teaching 292
 Law 82
 Medicine 53
 Other Professions 48
 Business, 65; all Others, 86 151
 Total 836



© 1908 Wabash College

Campus

WABASH COLLEGE

WABASH COLLEGE, Crawfordsville, Indiana

For Men. Organized 1834

Government.—By Twenty-one Trustees, who elect their successors, except four members elected by the Alumni.

Period covered by this Report.—June 1, 1911—June 1, 1912.

Faculty.—Number of Members. 22

Property. —Land (Acres, 33)	\$ 82,500.00	
Buildings (No. of, 6)	194,800.00	
Furniture and Equipment and Museum	49,927.00	
Library: No. of Books, 48,000, Value	60,000.00	
Total Property	\$378,227.00	

Endowment. —		
Income Producing	700,000.00	
(Pledges toward additional Endowment, \$41,000)		

Other Funds 3,000.00

Total Assets \$1,081,227.00

Less Net Indebtedness

Net Assets

Gifts Received During Year.—Endowment \$30,000.00

Expenses of Maintenance. —		
Faculty Salaries, \$31,419; Other Salaries, \$5,889.80	\$37,308.80	
All other Expenses	8,363.16	
Total Expenses	\$45,671.96	

Income for Maintenance. —		
From Endowment	\$39,534.00	
Student Fees	15,000.00	
Room Rent,; Boarding Department,	}	
Individuals,; Other Sources,	}	
Churches: Direct or through College Board		
College Board		
Total Income	\$54,534.00	

Surplus \$8,862.04

Students. —College	349	
Preparatory	
Others (Special)	
Graduates 1911-12	349	58

Bible Study.—Elective.

Alumni. —Since the year 1834:		
Ministers	210	
Students now in Theological Seminaries	10	
Foreign Missionaries	12	
Women in Mission Work	
Other Christian Workers	
Teaching	124	
Law	175	
Medicine	75	
Other Professions	34	
Business, 227; all Others, 329	556	
Total, Less 10, counted twice	1,186	



The Library and Physical Laboratory
WASHINGTON AND JEFFERSON COLLEGE

WASHINGTON AND JEFFERSON COLLEGE

Washington, Pennsylvania

For Men. Organized as Classical School 1780. Organized as Academy 1787.
Organized as College 1802.

Government.—By Thirty-one Trustees, who elect their successors.

Period covered by this Report.—June 30, 1911—June 30, 1912.

Faculty.—Number of Members. 29

Property. —Land (Acres, 16)	\$158,200.00	
Buildings (No. of, 8)	308,800.00	
Furniture and Equipment	20,000.00	
Library: No. of Books, 22,779; Value	55,000.00	
Total Property		\$542,000.00

Endowment. —		
Income Producing	\$577,772.00	
Non-income Producing	61,983.00	
Total Endowment		639,755.00

Other Funds.

Total Assets.	\$1,181,755.00	
Less Net Indebtedness.	26,689.00	

Net Assets. \$1,155,066.00

Gifts Received During Year.—

Building, \$34,918; Endowment, \$2,735		\$37,653.00
--	--	-------------

Expenses of Maintenance.—

Faculty Salaries, \$45,350; Other Salaries, \$3,425	\$48,775.00	
All other Expenses	31,102.00	
Total Expenses		\$79,877.00

Income for Maintenance.—

From Endowment	\$33,177.00	
Student Fees	29,363.00	
Room Rent and Boarding Department	12,543.00	
Individuals, \$4,500; Other Sources, \$100	4,600.00	
Churches: Direct or through College Board	
College Board	50.00	
Total Income		79,733.00

Surplus. \$144.00

Students. —College	315	
Preparatory	
Others (Special, 5 are short term students)	20	
Net Total (Men, 325; Women, 5; in summer school)		330
Graduates 1911-12		34

Bible Study.—Required of all Freshmen and Sophomores; elective for Juniors.

Alumni.—Since the year 1802:

Ministers	1,727	
Students now in Theological Seminaries	
Foreign Missionaries	104	
Women in Mission Work	
Other Christian Workers	
Teaching	83	
Law	1,118	
Medicine	570	
Other Professions	
Business, —; all Others	835	
Total		4,437



College Park

WAYNESBURG COLLEGE

WAYNESBURG COLLEGE, Waynesburg, Pennsylvania

Co-educational. Organized 1851

Government.—By Twenty-seven Trustees, who elect their successors; a majority must be members of the Presbyterian Church.

Period covered by this Report.—July 1, 1911—July 1, 1912.

Faculty.—Number of Members..... 9

Property. —Land (Acres, —).....	\$ 68,950.00	
Buildings (No. of, 3).....	175,000.00	
Furniture and Equipment.....	15,000.00	
Library: No. of Books, 8,500; Value.....	8,500.00	
Total Property.....	\$267,450.00	

Endowment. —		
Income Producing.....	\$68,375.00	
Non-income Producing.....	5,125.00	
Total Endowment.....	73,500.00	

Other Funds.....

Total Assets	\$340,950.00	
Less Net Indebtedness (Reduced on Feb. 3, 1913, to \$5,000).....	10,300.00	

Net Assets..... \$330,650.00

Gifts Received During Year.....

Expenses of Maintenance. —		
Faculty Salaries, \$7,665; Other Salaries, \$800.....	\$8,465.00	
All other Expenses.....	2,073.00	
Total Expenses.....	\$10,538.00	

Income for Maintenance. —		
From Endowment.....	\$2,350.00	
Student Fees.....	6,092.82	
Room Rent, \$232.57; Boarding Department,.....	232.57	
Individuals, \$478.37; Other Sources,.....	478.37	
Churches: Direct or through College Board.....		
College Board.....	1,500.00	
Total Income.....	10,653.76	

Surplus..... \$115.76

Students. —College.....	55	
Preparatory.....	63	
Others (Special).....	154	
Total (Men, —; Women, —).....	272	
Graduates 1911-12 (Men, 7; Women, 6).....	13	

Bible Study.—Required of all college students.

Alumni and Alumnae. —Since the year 1851:		
Ministers.....	106	
Students now in Theological Seminaries.....	..	
Foreign Missionaries.....	5	
Women in Mission Work.....	..	
Other Christian Workers.....	..	
Teaching.....	114	
Law.....	68	
Medicine.....	54	
Other Professions.....	..	
Business, —; all Others.....	442	
Total, Less 122, counted twice.....	667	



Helen Peabody Hall

WESTERN COLLEGE

THE WESTERN COLLEGE FOR WOMEN, Oxford, Ohio

Organized 1853

Government.—By Fifteen Trustees, who elect their successors. All must be Protestants and a majority members of some evangelical church.

Period covered by this Report.—June 1, 1911—May 31, 1912.

Faculty.—Number of Members. 33

Property.—Land (Acres, 80) \$ 24,000.00
 Buildings (No. of, 9) 287,709.63
 Furniture and Equipment 33,314.82
 Library: No. of Books, ———; Value 29,250.00
 Total Property \$374,274.45

Endowment.—
 Income Producing 293,342.54
Other Funds. 12,000.00

Total Assets. \$679,616.99
 Less Endowment invested in Dormitory 55,000.00

Net Assets. \$624,616.99

Gifts Received During Year.—
 Building, \$7,000; Endowment, \$84,199.11 \$91,199.11
 Amount received subject to Annuities not in above \$50,000.00

Expenses of Maintenance.—
 Faculty Salaries, \$25,490; Other Salaries, \$2,400. \$27,890.00
 All other Expenses 51,814.07
 Total Expenses \$79,704.07

Income for Maintenance.—
 From Endowment \$13,091.45
 Student Fees 27,933.93
 Room Rent, \$15,225; Boarding Department, \$26,023.75 41,248.75
 Individuals, \$168; Other Sources, \$3,689.57 3,857.57
 Churches: Direct or through College Board
 College Board
 Total Income 86,131.70

Surplus. \$6,427.63

Students.—College 212
 Preparatory 19
 Others (Special) 4
 Total 235
 Graduates 1911-12 24

Bible Study.—Required of all students.

Alumnæ.—Since the year 1853:
 Ministers
 Students now in Theological Seminaries
 Foreign Missionaries
 Women in Mission Work 97
 Other Christian Workers 6
 Teaching 120
 Law
 Medicine 3
 Other Professions 9
 Business, —; all Others 637
 Total 872



Main Building

WESTMINSTER COLLEGE

DENVER, COLORADO

WESTMINSTER COLLEGE, Denver, Colorado

(Legal Name, Westminster University Association)

Co-educational. Organized 1907

Government.—By Twenty-five Trustees, who elect their successors; two-thirds must be members of the Presbyterian Church.

Period covered by this Report.—September 15, 1911—June 1, 1912.

Faculty.—Number of Members. 8

Property.—Land (Acres, 400) \$140,000.00
 Buildings (No. of, 5; 3 are listed in Endowment) 207,000.00
 Furniture and Equipment 2,365.62
 Library: No. of Books, 3,100; Value 3,100.00
 Total Property \$352,465.62

Endowment.—
 Income Producing \$35,790.47
 Non-income Producing 26,645.00
 (Pledges toward additional Endowment, \$50,000)
 Total Endowment 62,435.47

Other Funds. 22,732.48

Total Assets. \$414,901.09
Less Net Indebtedness. 22,732.48

Net Assets. \$392,168.61

Gifts Received During Year.—
 For Endowment, \$73,400.50 (In Cash, \$6,090.50) \$73,400.50

Expenses of Maintenance.—
 Faculty Salaries, \$7,840; Other Salaries, \$1,153.85 \$8,993.85
 All other Expenses 9,039.16
 Total Expenses \$18,033.01

Income for Maintenance.—
 From Endowment \$ 1,482.90
 Student Fees 1,689.55
 Room Rent, —; Boarding Department, \$123.18 123.18
 Individuals, \$1,975.31; Other Sources, \$9,850.64 11,825.95
 Churches: Direct or through College Board 911.43
 College Board 2,000.00
 Total Income \$18,033.01

Deficit or Surplus.

Students.—College 16
 Preparatory 44
 Others (Special)
 Total (Men, 34; Women, 26) 60
 Graduates 1911-12 (Men, 2; Women, —) 2

Bible Study.—Required of all students.

Alumni and Alumnae.—Since the year 1907:
 Ministers 2
 Students now in Theological Seminaries
 Foreign Missionaries
 Women in Mission Work
 Other Christian Workers
 Teaching 2
 Law 1
 Medicine 1
 Other Professions
 Business, —; all Others, 3
 Total 9



Westminster Hall

WESTMINSTER COLLEGE

FULTON, MISSOURI

WESTMINSTER COLLEGE, Fulton, Missouri

For Men. Organized 1849

Government.—By Twenty-four Trustees, elected by the two Synods of Missouri, Presbyterian Church in the U. S., and Presbyterian Church in the U. S. A.

Period covered by this Report.—September 1, 1911—July 1, 1912.

Faculty.—Number of Members 12

Property.—Land (Acres, 38) \$ 33,800.00
 Buildings (No. of, 6) 148,634.95
 Furniture and Equipment 12,060.81
 Library: No. of Books, 4,150; Value 4,924.07
 Total Property \$199,419.83

Endowment.—
 Income Producing \$195,314.77
 Non-Income Producing 26,800.00
 Total Endowment 222,114.77

Other Funds

Total Assets \$421,534.60
Less Net Indebtedness 29,624.63

Net Assets \$391,909.97

Gifts Received During Year.—For Building, \$525; Endowment, \$2,000 \$2,525.00

Expenses of Maintenance.—
 Faculty Salaries, \$12,200; Other Salaries, \$3,870 . . . \$16,070.00
 All other Expenses 10,422.03
 Total Expenses for twelve months \$26,492.03

Income for Maintenance.—
 From Endowment \$11,576.94
 Student Fees 5,473.00
 Room Rent, \$394.25; Boarding Department, _____ 394.25
 Individuals, \$90; Other Sources, _____ 90.00
 Churches: Direct or through College Board 597.07
 College Board _____
 Total Income for ten months 18,131.26

Deficit \$8,360.77

Students.—College 67
 Preparatory 53
 Others (Special) 1
 Total* 121
 Graduates 1911-12 12

Bible Study.—Required of all students.

Alumni.—Since the year 1849:
 Ministers 114
 Students now in Theological Seminaries
 Foreign Missionaries 15
 Women in Mission Work
 Other Christian Workers 5
 Teaching 59
 Law 03
 Medicine 50
 Other Professions 26
 Business, 88; all Others, _____ 88
 Total, Less 23, counted twice 397

* Total students this year, 1912-13:—158.



Converse Hall

Ferry Hall

WESTMINSTER COLLEGE
SALT LAKE, UTAH

WESTMINSTER COLLEGE,* Salt Lake City, Utah

Co-educational. Organized 1897

Government.—By Eighteen Trustees, who elect their successors, but their election must be confirmed by the Presbyterian Ministers of Utah.

Period covered by this Report.—June 1, 1911—June 1, 1912.

Faculty.—Number of Members..... 6

Property. —Land (Acres, 20).....	\$ 60,000.00	
Buildings (No. of, 4)	116,700.00	
Furniture and Equipment.....	1,250.00	
Library: No. of Books, 2,000; Value.....	1,000.00	
Total Property.....		\$178,950.00

Endowment. —Income Producing.....		3,778.55
Other Funds

Total Assets		\$182,728.55
Less Net Indebtedness

Net Assets.....

Gifts Received During Year..... \$4,056.50

Expenses of Maintenance.—

Faculty Salaries, \$7,000; Other Salaries, ———	\$7,000.00	
All other Expenses.....	3,224.43	
Total Expenses.....		\$10,224.43

Income for Maintenance.—

From Endowment.....	\$1,094.50	
Student Fees.....	1,711.10	
Room Rent, ———; Boarding Department, \$463.35	463.35	
Individuals, \$4,056.50; Other Sources, ———	4,056.50	
Churches: Direct or through College Board.....	110.00	
College Board (Total Grant, \$1,000).....	500.00	
Total Income.....		7,935.45

Deficit (Provided for by special funds).....		\$2,288.98
---	--	------------

Students. —College.....		
Preparatory.....	66	
Others (Special).....	..	
Total (Men, 31; Women, 35).....		66
Graduates 1911-12 (Men, 1; Women, 5).....		6

Bible Study.—Required of all students.

Alumni and Alumnae.—

Ministers.....		
Students now in Theological Seminaries.....		
Foreign Missionaries.....		
Women in Mission Work.....		
Other Christian Workers.....		
Teaching.....		
Law.....		
Medicine.....		
Other Professions.....		
Business. —; all Others, —.....		
Total.....	

* Not yet formally operating as a college.



Administration Building and Library



Ladies' Hall

WHITWORTH COLLEGE

WHITWORTH COLLEGE, Tacoma, Washington

Co-educational. Organized 1890

Government.—By Twenty-four Trustees, who elect their successors. Two-thirds must be members of the Presbyterian Church, and election must be approved by Synod.

Period covered by this Report.—July 1, 1911—August 30, 1912.

Faculty.—Number of Members. 17

Property.—Land (Acres, 14) \$52,000.00
 Buildings (No. of, 6) 87,500.00
 Furniture and Equipment 8,000.00
 Library: No. of Books, 5,500; Value 4,000.00
 Total Property \$151,500.00

Endowment.—
 Income Producing \$67,450.00
 Non-income Producing 10,000.00
 (Pledges toward additional Endowment Fund,
 \$50,000)
 Total Endowment 77,450.00

Other Funds.

Total Assets. \$228,950.00

Less Net Indebtedness (\$5,526.85 subscription payable before
 January 1, 1913, toward debt) 27,176.35

Net Assets. \$201,773.65

Gifts Received During Year.

Expenses of Maintenance.—
 Faculty Salaries, \$17,739.43; Other Salaries, \$2,750 \$20,489.43
 All other Expenses 10,705.35
 Total Expenses (13 Months) \$31,194.78

Income for Maintenance.—From Endowment \$ 1,091.25
 Student Fees 7,058.82
 Room Rent, \$1,718.45; Boarding Department,
 \$89.74 2,528.19
 Individuals, \$5,656.18; Other Sources, \$7,300 12,956.18
 Churches: Direct or through College Board 601.08
 College Board 2,050.00
 Total Income 26,285.52

Deficit. \$4,909.26

Students.—College 61
 Preparatory 51
 Others (Special) 39
 Total (Men, 61; Women, 90) 151
 Graduates 1911-12 (Men, 3; Women, 5) 8

Bible Study.—Required of all regular students.

Alumni and Alumnae.—Since the year 1890:
 Ministers 4
 Students now in Theological Seminaries 3
 Foreign Missionaries 1
 Women in Mission Work
 Other Christian Workers
 Teaching 26
 Law 6
 Medicine 7
 Other Professions 10
 Business, 8; all Others, 21 29
 Total, Less 1, counted twice 85

NOTE:—Whitworth College lays emphasis upon scholastic attainments. Two of her graduates have qualified for the Rhodes Scholarship.



A Section of the Campus
WILSON COLLEGE

WILSON COLLEGE, Chambersburg, Pennsylvania

(Legal Name, Wilson Female College)

For Women. Organized 1869. Opened 1870

Government.—By Twenty-nine Trustees, who elect their successors; a majority must be members of the Presbyterian Church.

Period covered by this Report.—July 1, 1911—July 1, 1912.

Faculty.—Number of Members. 30

Property. —Land (Acres, 50)	\$ 41,540.90	
Buildings (No. of, 14)	232,584.15	
Furniture and Equipment, Machinery and Fixtures	69,705.25	
Library: No. of Books, 12,000; Value	10,633.30	
Total Property		\$354,463.60

Endowment. —Income Producing		67,628.09
Other Funds.

Total Assets.*		\$422,091.69
Less Net Indebtedness.		10,000.00

Net Assets.		\$412,091.69
------------------------------	--	--------------

Gifts Received During Year.

Expenses of Maintenance. —		
Faculty Salaries, \$19,538.58; Other Salaries,*		
\$11,863.63	\$31,402.21	
All other Expenses	4,566.55	
Total Expenses		\$35,968.76

Income for Maintenance. —		
From Endowment		
Student Fees	\$ 3,272.09	
Room Rent and Boarding Department	20,948.79	
Individuals, —; Other Sources, \$4,541.14	4,541.14	
Churches: Direct or through College Board		
College Board		
Total Income		28,762.02

Deficit.		\$7,206.74
---------------------------	--	------------

Students. —College	184	
Preparatory		
Others (Special)	78	
Total		262
Graduates 1911-12		50

Bible Study.—Required of all students.

Alumnæ. —Since 1869; Alumnæ details being prepared:		
Ministers		
Students now in Theological Seminaries		
Foreign Missionaries		
Women in Mission Work		
Other Christian Workers		
Teaching		
Law		
Medicine		
Other Professions		
Business, —; all Others, —		
Total		742

* Includes President's salary for six months.



THE UNIVERSITY OF WOOSTER

THE UNIVERSITY OF WOOSTER, Wooster, Ohio

Co-educational. Organized 1866

Government.—By Twenty-seven Trustees, elected by the Synod of Ohio.

Period covered by this Report.—May 31, 1911—June 1, 1912.

Faculty.—Number of Members. 39

Property. —Land (Acres, 55).....	\$ 67,122.83	
Buildings (No. of 24).....	967,613.00	
Furniture and Equipment.....	31,437.58	
Library: No. of Books, 33,500; Value.....	25,000.00	
Total Property.....	\$1,091,173.41	

Endowment. —		
Income Producing.....	\$1,112,217.11	
Non-income Producing.....	972.56	
Total Endowment.....	1,113,189.67	

Other Funds..... 38,439.46

Total Assets	\$2,242,802.54	
Less Net Indebtedness , \$6,094.58; and Salaries due, \$13,880.....	19,974.58	

Net Assets..... \$2,222,827.96

Gifts Received During Year.—

For Various Funds, \$3,000; Building, \$81,437.50...	\$ 84,437.50	
Equipment, \$51,675.03; Endowment, \$106,455.67.	158,130.70	
Total.....	\$242,568.20	

Expenses of Maintenance.—

Faculty Salaries, \$54,120; Other Salaries, \$11,361.40	\$65,481.40	
All other Expenses.....	43,357.15	
Total Expenses.....	\$108,838.55	

Income for Maintenance.—

From Endowment.....	\$61,620.21	
Student Fees.....	33,075.34	
Room Rent and Boarding Department, net.....	3,884.60	
Individuals, _____; Other Sources, \$8,377.57.....	8,377.57	
Churches: Direct or through College Board.....	598.66	
College Board.....	50.00	
Total Income.....	107,606.38	

Deficit..... \$1,232.17

Students. —College.....	463	
Preparatory.....	169	
Others (including 1,025 short term students).....	1,375	
Total, (Men, 358; Women, 274, regular students)	2,007	
Graduates 1911-12 (Men, 44; Women, 51).....	95	

Bible Study.—Required of all regular students.

Alumni and Alumnae.—Since the year 1866:

Ministers.....	279	
Students now in Theological Seminaries.....	20	
Foreign Missionaries.....	67	
Women in Mission Work.....	..	
Other Christian Workers.....	26	
Teaching.....	399	
Law.....	130	
Medicine.....	98	
Other Professions.....	259	
Business, 128; all Others, 191.....	319	
Total, Less 10, counted twice.....	1,587	

“Finally, Brethren”

You have read the story.

You have learned of what has been accomplished.

You have been given a panoramic view of what is being done, though this book can give no conception of the sacrifices and the heartaches which have accompanied and still accompany the doing.

By faith, in much self-denial, through consecrated toil, noble men and women have made possible your sense of pride in your Church as you close this book.

Similar men and women are still toiling in a similar manner to accomplish yet more for Christ and the Church.

Much more is yet to be done by Presbyterians.

Will You Help Do It?

Did You

have some part
in the work
of the past ?

Will You

do your part
in the work
of the future ?

Index

THE COLLEGE BOARD

	PAGE
An Anniversary	3
Organization of Board, 1883	5
Growth of Presbyterian Colleges	6

THE COLLEGES

Product of Presbyterian Colleges	11
Albany College	13
Albert Lea College	15
Alma College	17
Arkansas Cumberland College	19
Bellevue College	21
Blackburn College	23
Blairsville College	25
Buena Vista College	27
Carroll College	29
Central University of Kentucky	31
Coe College	33
Cumberland University	35
Davis and Elkins College	37
Elmira College	39
Emporia, College of	41
Grove City College	43
Hanover College	45
Hastings College	47
Henry Kendall College	49
Highland College	51
Highland Park College	53
Huron College	55
Idaho, College of	57
Illinois College	59
James Millikin University	
Decatur College and Industrial School	61
Lincoln College	63
Jamestown College	65
Kentucky College for Women	67
Lafayette College	69
Lake Forest College	71
Lenox College	73
Lincoln University	75
Lindenwood College	77
Macalester College	79
Maryville College	81
Missouri Valley College	83
Montana, College of	85
New York University	87
Occidental College	89
Oswego College	91
Park College	93
Parsons College	95
Pikeville College	97
Reynolds College	99
Texas Fairmont Seminary	101
Trinity University	103
Tusculum College	105
Wabash College	107
Washington and Jefferson College	109
Waynesburg College	111
Western College	113
Westminster College, Colorado	115
Westminster College, Missouri	117
Westminster College, Utah	119
Whitworth College	121
Wilson College	123
Wooster, University of	125

LIBRARY OF CONGRESS



0 029 501 292 4

